

BMW 6 Series
Gran Coupé

www.bmw.com



Sheer
Driving Pleasure



THE NEW BMW 6 SERIES GRAN COUPÉ.

BMW EfficientDynamics
Less emissions. More driving pleasure.

International version. Please contact your local dealer for country specific information.

A SPECIAL MOMENT OF RARE BEAUTY.

The new BMW 6 Series Gran Coupé is the expression of nothing less than a desire for perfection. The driving force: curiosity, the courage to think anew and unconditional will. The result: a car that has never been seen in this form, combining pioneering design, uncompromising sportiness and exclusive elegance.



Editorial

A PHENOMENON FOR ALL THE SENSES.

The mystical light of the corona, the spellbinding silence of nature – a total solar eclipse stirs all the senses. A magical effect can also be experienced in the new BMW 6 Series Gran Coupé. The flowing lines fascinate the beholder. The high-quality materials cast a beguiling spell. The sound of the powerful engine sets the acoustic tone for the future. Elegance, exclusivity and sportiness combine in a way that can only be described as pioneering – and the effect is impossible to resist.

One thing is immediately apparent. This car is for people who appreciate something special.

For them, BMW has reinvented the coupé, creating a four-door car with irresistible dynamics and aesthetics that re-awaken the joy of driving every day.

➔ www.bmw.com/6seriesgrancoupe

Equipment of model shown: BMW 650i Gran Coupé

Engine: BMW TwinPower Turbo 8-cylinder petrol engine
Output: 330 kW (450 hp)
Wheels: 19" light-alloy wheels, W-spoke 423, with mixed tyres

Exterior colour: BMW Individual Frozen Bronze metallic
Upholstery: BMW Individual fine-grain Merino leather, Opal White

For information on fuel consumption and CO₂ emissions, see page 27.



TOTALLY EXCEPTIONAL.

An encounter of timeless fascination. True beauty is a rarity. When it does reveal itself, it is usually only for a fleeting moment, and often only in special places. The following pages reveal minute-by-minute examples of these phenomena: a total solar eclipse viewed from an observatory and an

automotive dream – the new BMW 6 Series Gran Coupé. Both are unique. The natural wonder, because only in the rarest instances does it appear in complete perfection. And the four-door Coupé, because its sensual lines create such an impressively elegant design.

14:18:19



SHARP PROFILE.

A clearly contoured character. The new BMW 6 Series Gran Coupé is the first four-door coupé from BMW, combining exclusive elegance with agile dynamics in a way that has never been seen before. With this car, BMW is setting a new benchmark in the luxury class. Artfully presented design features such as

the flat proportions, long bonnet and set-back passenger compartment accentuate the sporty personality of the Gran Coupé – forming a complete work of art that exudes pure individuality.

14:25:01



FORCE OF ATTRACTION.

Dynamics that inspire. One look at the rear section and the sporty genes of the new BMW 6 Series Gran Coupé reveal themselves in all their nuances. The visually low-lying centre of gravity combines with the horizontal and v-shaped lines to create an image of powerful elegance and exciting dynamics.

The light design is equally striking, with the third brake light integrated across the entire width of the rear window. Together with the clearly contoured rear lights, the vehicle is instantly recognisable as the BMW 6 Series Gran Coupé.

14:26:29



PERFECT FORM.

Elegant in even the smallest detail. The stylish lines of the new BMW 6 Series Gran Coupé lead the eye on a journey of discovery. From the dynamic sweep of the Coupé lines and the characteristic BMW Hofmeister kink, your gaze flows through to the sporty rear light design. A further refinement

is the optional matt paintwork in BMW Individual Frozen Bronze metallic. This gives a very personal touch, harmonising perfectly with both the lightness of design and the commanding presence of the new BMW 6 Series Gran Coupé.

14:28:41



STRENGTH IN SILENCE.

Time for exclusive comfort. The interior leaves no sense unstimulated. The use of premium materials and first-class workmanship create an exclusive, and very private, space that invites you to linger. The BMW 6 Series Gran Coupé also impresses when it comes to functionality, as demonstrated by the versatility

of the rear. The sporty back seats offer comfortable space for two people and, as a 4+1-seater, the BMW 6 Series Gran Coupé can even carry up to three people for short distances. If required, the back rests of the rear seats can be folded down in a 60:40 configuration.

14:30:18



FORWARD VISION.

The art of the overview. From the moment you experience the new BMW 6 Series Gran Coupé, you will not want to settle for anything less than its individual luxury and perfect ergonomics. Drivers as well as passengers are entirely at one with the sensual interior design. At the same time, the elegantly

curved centre console divides the space into two private areas for optimum comfort. Comfort that is further increased, for example, by the optional full-colour Head-Up Display. Overall, this car presents a vision of the perfect interior – with a clear view on maximum safety.

14:35:20



LEADING LIGHT.

Resolutely forward looking. Clear structures distinguish the face of the new BMW 6 Series Gran Coupé. Wherever the eye may roam – every square centimetre exudes pure authority. Dynamic flowing lines, the low-lying front and the prominent, centrally located double grille emphasise the self-confident

appearance. Optional Adaptive LED headlights with integrated turning lights and the high beam assistant also underscore the typical character of BMW, giving the face a purposeful presence.



TECHNOLOGY AS ART.

■ V8 engine.

BMW engineers have almost achieved the impossible with the newly developed BMW TwinPower Turbo 8-cylinder 650i¹ petrol engine. Thanks to a combination of two turbochargers, Valvetronic, Double VANOS and High Precision Injection, along with the optimisation of further engine components, they have managed to increase performance by 10 per cent to 330 kW (450 hp)². This allows the BMW to develop 650 Nm of torque, using this enormous power to accelerate the car from 0 to 100 km/h in just 4.6 seconds (650i xDrive 4.5 s). Equipping it with the Auto Start/Stop function and other BMW EfficientDynamics measures has reduced average fuel consumption by around 17 per cent to 8.8–8.6 l/100 km (650 xDrive: 9.4–9.2 l), while CO₂ emissions are just 206–199 g/km² (650i xDrive: 219–215 g/km²).



■ Adaptive LED headlights.

The new BMW 6 Series Gran Coupé offers an altogether new visual experience with its optional Adaptive LED headlights. The striking, sporty BMW design with the 3D light rings allows light architecture with unique functionality. Double-round headlights project low and high LED beams from the two rings of light. Additionally, the new LED headlights incorporate the mobility of adaptive turning lights and their various illumination options. The integrated high-beam assistant and the extremely white, high-contrast light generated by LED technology ensure a highly comfortable and safe driving experience.



■ Bang & Olufsen High End Surround Sound system.

On request, the leading name for hi-fi enthusiasts brings sound to the interior of the new BMW 6 Series Gran Coupé that excites and inspires. A total of 16 loudspeakers ensure an overwhelming surround sound experience and revolutionary Dirac Dimensions technology delivers brilliant and impressively natural depth. Additionally, intelligent Acoustic Lens technology creates an audio image that offers a listening experience just like being in a concert hall, from any seat in the car. Your eyes are also treated to the design of the anodized aluminium loudspeaker frames with their special light orchestration.



■ A spacious feel.

Exclusive, high-quality, inviting – the interior of the new BMW 6 Series Gran Coupé exudes a sporty and luxurious ambience. Flowing lines give the four-door Coupé a special elegance and the high-quality, detailed workmanship impresses time and again, whether you sit in the front or the rear. And because it is designed as a 4+1-seater, the new BMW 6 Series Gran Coupé can even accommodate five for short journeys. All, of course, enjoy a unique driving experience.



■ Full-colour BMW Head-Up Display.

This innovative BMW ConnectedDrive option projects all important information, such as navigation instructions, into the driver's direct field of vision so that an eye can be kept on the traffic at all times. Information is projected with crisp clarity and in full colour. In addition to speed, navigation instructions and Speed Limit Info, data from driver assistance systems, such as Lane Departure Warning and BMW Night Vision with Pedestrian Recognition, can also be displayed. The BMW Head-Up Display reduces the frequency with which the driver looks away from the road and to the instrument panel by up to 90 per cent. In this way, the full-colour BMW Head-Up Display makes an important contribution to active safety in traffic.

¹ Expected to be available from third quarter 2012.

² Values are estimated and not officially confirmed. Estimated consumption figures determined according to ECE test cycle. Fuel consumption, CO₂ emissions and energy efficiency class dependent on the wheel and tyre size fitted. For more information please see page 27 or contact your BMW partner.

VERSATILE WITH ITS EQUIPMENT, UNIQUE IN ITS DRIVING DYNAMICS – THE NEW BMW 6 SERIES GRAN COUPÉ.



M Sport package.

The M Sport package offers sportiness in a class of its own with exterior features that emphasise the dynamic heritage of the BMW 6 Series Gran Coupé even further. The front and rear aprons and side sills of the M Aerodynamics package, for instance, create a particularly sporting impact when combined with 19" or 20" M light-alloy wheels (optional), special bodywork colours, dark chrome tailpipes and black painted brake calipers. The 650i also has a sport exhaust system that reinforces the powerful overall impression. The sporting character is evident in the passenger compartment, too, with features such as a grippy M leather steering wheel, special Alcantara-leather combination sport seats and additional trim elements in aluminium or a distinctive black.



Wide range of equipment.

The new BMW 6 Series Gran Coupé is a vehicle that meets almost every need. Configure your own new BMW 6 Series Gran Coupé from a wide range of equipment, finishes, upholstery, interior trim and BMW light-alloy wheels. And should you want your BMW to be even more distinctive when it comes to its equipment, take a look at the tailor-made BMW Individual Composition.

iPad holder.

Work, information, relaxation: the best platform for all this is the BMW holder (Original BMW Accessory*) for the Apple iPad, which is simply fitted to the headrest pillars on the front seats (not possible in conjunction with sport seats). Further components in the modular Travel & Comfort system are also available.



BMW 650i¹ – BMW TwinPower Turbo 8-cylinder petrol engine.

This newly developed BMW engine combines two turbochargers with Valvetronic, Double VANOS and High Precision Injection. The engine has extremely deep power reserves, with torque of 650 Nm, and consumes just 8.8–8.6 l/100 km² (650i xDrive: 9.4–9.2 l). With output of 330 kW (450 hp)², the new BMW takes just 4.6 seconds (650i xDrive: 4.5 s) to accelerate from 0 to 100 km/h.

BMW 640i – BMW TwinPower Turbo 6-cylinder in-line petrol engine.

This engine combines a TwinScroll turbocharger with Valvetronic, Double VANOS and High Precision Injection. The performance figures are impressive: 235 kW (320 hp)², maximum torque of 450 Nm, 0 to 100 km/h in 5.4 s, average consumption 7.9–7.7 l/100 km².

BMW 640d – BMW TwinPower Turbo 6-cylinder in-line diesel engine.

Sporty performance figures with the greatest efficiency – built on the foundation of BMW TwinPower Turbo technology, common rail direct injection and two-stage turbocharging combined with variable turbine geometry. Output of 230 kW (313 hp)² and 630 Nm of torque accelerate the new BMW from 0 to 100 km/h in 5.4 seconds. Average consumption: just 5.7–5.5 l/100 km².

BMW EfficientDynamics
Less emissions. More driving pleasure.



BMW EfficientDynamics.

This multi-award winning technology package incorporates a host of innovative measures for production models. It reduces fuel consumption and CO₂ emissions, while at the same time increasing performance and dynamics. This is ensured by the 8-speed sport automatic transmission equipped with the Auto Start/Stop function and further measures such as ECO PRO mode and Brake Energy Regeneration.

Chassis.

The optional intelligent xDrive four-wheel-drive system allows the new BMW 6 Series Gran Coupé 650i xDrive¹ to adapt perfectly to difficult road conditions by always offering maximum traction and directional stability. The optional Adaptive Drive system combines the two active chassis control systems, Dynamic Drive and Dynamic Damper Control. These ensure the greatest travelling comfort thanks to reduced body roll and shock absorber settings that are individually selectable via the Driving Experience button. Optionally available integral Active Steering combines steering rear wheels with variable steering ratios on the front axle for more manoeuvrability, agility and driving comfort (not in conjunction with xDrive).

* May not be available in all countries. Please consult your BMW partner.

¹ Expected to be available from third quarter 2012.

² Values of BMW 650i and BMW 650i xDrive are estimated and not officially confirmed. Estimated consumption figures determined according to ECE test cycle. Fuel consumption, CO₂ emissions and energy efficiency class dependent on the wheel and tyre size fitted. For more information please see page 27 or contact your BMW partner.

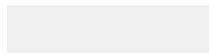
Exterior colours.



■ **Non-metallic** 668 Black



□ **Metallic** A52 Space Grey



■ **Non-metallic** 300 Alpine White



□ **Metallic** A92 Orion Silver



□ **Non-metallic** 405 Imola Red[†]



□ **Metallic** A82 Vermilion Red



□ **Metallic** A96 Mineral White



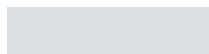
□ **Metallic** A76 Deep Sea Blue



□ **Metallic** 475 Sapphire Black



□ **Metallic** A17 Havanna



□ **Metallic** 354 Titanium Silver



□ **Metallic** 416 Carbon Black[‡]



BMW Individual



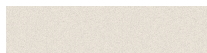
□ **BMW Individual**
X02 Citrine Black metallic



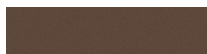
□ **BMW Individual**
X03 Ruby Black metallic



□ **BMW Individual**
X10 Tanzanite Blue metallic



□ **BMW Individual**
X04 Moonstone metallic



□ **BMW Individual**
X11 Frozen Bronze metallic

Interior colours/ BMW Individual roofliner.



Black



Ivory White



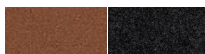
BMW Individual



□ **BMW Individual roofliner**
775 Anthracite

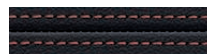


□ **BMW Individual roofliner**
XD5 Alcantara Platinum or
Champagne



□ **BMW Individual roofliner**
XD5/776 Alcantara Amaro
Brown or Anthracite

Contrasting stitching.



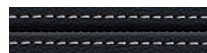
□ **Contrasting stitching[‡]**
4KS Vermilion Red



□ **Contrasting stitching[‡]**
4KS Ivory White



□ **Contrasting stitching[‡]**
4KS Cinnamon



□ **Contrasting stitching[‡]**
4KS Grey

Please note that over time even correct use can lead to unrecoverable upholstery damage. This can be caused in particular by non-colourfast clothing.

Upholstery colours.



■ **Dakota leather¹**
LCSW Black



□ **Exclusive extended Nappa leather²**
NASW Black



■ **Dakota leather¹**
LCEZ Ivory White



□ **Exclusive extended Nappa leather²**
NAEX Ivory White



■ **Dakota leather¹**
LCEZ Cinnamon



□ **Exclusive extended Nappa leather²**
NAEZ Cinnamon



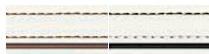
□ **Alcantara-Nappa leather combination^{4,5}**
GPAT Anthracite



□ **Exclusive extended Nappa leather²**
NABY Vermilion Red



BMW Individual



□ **BMW Individual fine-grain Merino leather⁶**
ZBOB/ZBOW Opal White



□ **BMW Individual fine-grain Merino leather⁶**
ZBC8 Platinum



□ **BMW Individual fine-grain Merino leather⁶**
ZBP6 Champagne



□ **BMW Individual fine-grain Merino leather⁶**
ZBP5 Amaro Brown



□ **BMW Individual fine-grain Merino leather⁶**
ZBWT Cohiba Brown

Interior trim.



■ 4AT Black, high-gloss



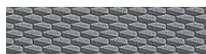
□ 4AS Fine-wood trim
Poplar Grain Grey



□ 4CV Fine-wood trim
American Oak



□ 4B9 Fine-brushed Aluminium



□ 4MR Aluminium Hexagon⁴



BMW Individual



□ **BMW Individual interior trim XEX** Fine-wood trim Ash Grain White



□ **BMW Individual interior trim XE5** Fine-wood trim Plane Auburn, dark



□ **BMW Individual interior trim XE7** Piano Finish Black

¹ Dakota leather on seat surfaces and backrests of front and rear seats, headrests and door armrests.

² Exclusive Nappa leather on seat surfaces and backrests of front and rear seats, headrests, side seat and backrest parts, interior door mirror and armrests in the doors. Only in conjunction with comfort seats.

³ Only available in conjunction with leather-covered instrument panel and in the selected upholstery colour (in Dakota leather Black or Exclusive Nappa leather Black with Grey contrasting stitching).

⁴ Only available in conjunction with M Sport package.

⁵ Not available in conjunction with contrasting stitching.

⁶ BMW Individual full leather equipment fine-grain Merino leather includes front and rear seats including headrests, door mirrors, centre console incl. armrests and the lower part of the instrument panel. Upper part of the instrument panel, upper and lower door panel in Nappa leather Black. Only available in conjunction with sport or comfort seats.

⁷ Contrasting stitching, piping, upper instrument panel, upper door trim, lower door panels and centre armrest in Amaro Brown.

The following pages show the colours and materials available for the new BMW 6 Series Gran Coupé. Use them to identify your favourite colours or compare various combinations. These colour samples are meant to give a first impression of paints and materials. Experience has shown, however, that printed versions of paint, upholstery colours and interior trims cannot in all cases faithfully reproduce the appearance of the originals. We therefore recommend that you consult your BMW partner on your preferred colour choices. They will be happy to show you samples and assist with special requests.

Security	640i	650i ¹ xDrive ¹	640d
Active head-restraints, front	■	■	■
Airbags:			
– Driver and front passenger airbag, incl. front passenger airbag deactivation and seat occupancy detection for the front passenger seat	■	■	■
– Head airbag front and rear (curtain)	■	■	■
– Side airbag for driver and front passenger	■	■	■
BMW Service Inclusive* covers a wide range of service and maintenance work carried out by all participating BMW partners worldwide; individual contract length and service level can be selected	□	□	□
Brakes:			
– Disc brakes front and rear, inner-vented	■	■	■
Central locking with electronic immobiliser, crash sensor; fuel tank filler cap integrated in central locking	■	■	■
Dynamic braking lights with flash function	■	■	■
Dynamic Damper Control	□	□	□
Dynamic Stability Control (DSC) , incl. Traction Mode (DTC), Anti-lock Braking System (ABS), Cornering Brake Control (CBC), Brake Assistant	■	■	■
Hill Descent Control (HDC) for xDrive models	–	■	–
ISOFIX child seat attachment for the rear outer seats	■	■	■
Runflat indicator	■	■	■
Safety battery terminal	■	■	■
Safety bodysheild:			
– Side impact protection	■	■	■
– Deformation zones, front and rear, aluminium door reinforcements, bumpers that regenerate to their original shape in impacts of up to 6 km/h	■	■	■
Seat belts:			
– Automatic front seat belts with pyrotechnic belt latch tensioner, adaptive belt force limiter and belt clamp	■	■	■
– Rear seat belt system with 3-point automatic belts and anchor fitting pretensioner	■	■	■
Third brake light with LED technology , raised and along the whole width of the rear window	■	■	■
Tyre pressure indicator	□	□	□

Exterior design	640i	650i ¹ xDrive ¹	640d
BMW Individual Exterior Line aluminium, satinated	□	□	□
BMW Individual High-gloss Shadow Line	□	□	□
Chrome Line exterior	■	■	■
Four doors , frameless	■	■	■
Front ornamental grille , chrome frame, front of the vertical slats in chrome, sides in Black	■	–	■
Front ornamental grille , chrome frame, vertical slats in chrome	–	■	–
Metallic paintwork	□	□	□

* May not be available in all countries. Please consult your BMW partner.

¹ Expected to be available from third quarter 2012.

² Not in conjunction with Climate Comfort windscreens.

Equipment packages*	640i	650i ¹ xDrive ¹	640d
BMW Individual Composition , including full fine-grain Merino leather equipment, interior trim, wood inlay for the leather steering wheel, Alcantara headliner and door sill with lettering.	□	□	□
M Sport package , including M Aerodynamics package, LED fog lights, 19" M light-alloy wheels 351 M or optional 20" M light-alloy wheels 373 M, sport seats for driver and front passenger in Alcantara/leather combination, Aluminium Hexagon interior trim, M leather steering wheel, M door sills, Anthracite roof liner	□	□	□
Navigation system Professional with integrated mobile phone preparation Bluetooth , telematics-compatible (incl. voice control, BMW Assist*, BMW Online*, internet* and Emergency Call function*)	□	□	□
Smoker's package	□	□	□

Wheels and tyres	640i	650i ¹ xDrive ¹	640d
Wheels:			
– 17" light-alloy wheels Star-spoke 365, 8 J x 18, 245/45 R 18 Y tyres	■	–	■
– 18" light-alloy wheels Star-spoke 365, 8 J x 18, 245/45 R 18 Y tyres	□	■	□
– 19" light-alloy wheels W-spoke 423 with mixed tyres, front: 8.5 J x 19" with 245/40 R 19 tyres, rear: 9 J x 19" with 275/35 R 19 tyres	□	□	□
– 19" light-alloy wheels Star-spoke 367 with mixed tyres, front: 8.5 J x 19" with 245/40 R 19 tyres, rear: 9 J x 19" with 275/35 R 19 tyres	□	□	□
– 19" light-alloy wheels V-spoke 366 with mixed tyres, front: 8.5 J x 19" with 245/40 R 19 tyres, rear: 9 J x 19" with 275/35 R 19 tyres	□	□	□
– 19" M light-alloy wheels Double-spoke 351M with mixed tyres, front: 8.5 J x 19" with 245/40 R 19 tyres, rear: 9 J x 19" with 275/35 R 19 tyres (in conjunction with M Sport package)	□	□	□
– 20" M light-alloy wheels Double-spoke 373M with mixed tyres, front: 8.5 J x 20" with 245/35 R 20 tyres, rear: 9 J x 20" with 275/30 R 20 tyres (in conjunction with M Sport package)	□	□	□
– 20" light-alloy wheels V-spoke 356 with mixed tyres, front: 8.5 J x 20" with 245/35 R 20 tyres, rear: 9 J x 20" with 275/30 R 20 tyres	□	□	□
– 20" BMW Individual light-alloy wheels V-spoke 374 I, forged, with mixed tyres, front: 8.5 J x 20" with 245/35 R 20 tyres, rear: 9 J x 20" with 275/30 R 20 tyres	□	□	□
Runflat tyres	■	■	■

Interior features	640i	650i ¹ xDrive ¹	640d
BMW Individual roofliner Anthracite and Alcantara	□	□	□
Door sill finishers , chrome-plated	■	■	■
Interior trim:			
– Black, high gloss	■	■	■
– BMW Individual Interior trim	□	□	□
– Fine-wood trim Poplar Grain Grey	□	□	□
– Fine-wood trim American Oak	□	□	□
– Fine-brushed Aluminium	□	□	□

■ Standard equipment

□ Optional equipment

– Not available

Interior features	640i	650i ¹ xDrive ¹	640d
Upholstery:			
– BMW Individual Fine-grain Merino leather	□	□	□
– Dakota leather	■	■	■
– Exclusive extended Nappa leather	□	□	□

Transmission and technology	640i	650i ¹ xDrive ¹	640d
8-speed Sport automatic transmission Steptronic with Adaptive Transmission Management, electronic selection lever, gearshift paddles on the Sport steering wheel	■	■	■
Adaptive Drive (Dynamic Drive)	□	□	□
Aluminium integral rear axle	■	■	■
Auto Start/Stop function	■	■	■
BMW TwinPower Turbo 6-cylinder in-line petrol engine combines a TwinScroll turbocharger with Valvetronic, Double VANOS and High Precision Injection	■	–	–
BMW TwinPower Turbo 6-cylinder in-line diesel engine combines common rail direct injection and two-stage turbocharging with variable turbine geometry	–	–	■
BMW TwinPower Turbo 8-cylinder in-line petrol engine combines two turbochargers with Valvetronic, Double VANOS and High Precision Injection	–	■	–
Brake Energy Regeneration , incl. display on the rev counter	■	■	■
Double-joint spring strut front axle	■	■	■
Driving Experience button , incl. ECO PRO Mode	■	■	■
Integral Active Steering (not in conjunction with xDrive)	□	□	□
Parking brake with auto-hold function , electromechanical	■	■	■
Servotronic	■	■	■

BMW ConnectedDrive – driver assistance systems	640i	650i ¹ xDrive ¹	640d
Active Cruise Control with Stop&Go function	□	□	□
BMW Head-up Display , full-colour	□	□	□
BMW Night Vision with Pedestrian Recognition and Acute Warning	□	□	□
Cruise Control with brake function	■	■	■
High-beam assistant	□	□	□
Lane Departure Warning system	□	□	□
Park Distance Control (PDC) , front and rear, with optical and acoustic indicator	□	□	□
Parking assistant (not in conjunction with xDrive)	□	□	□
Rear view camera (only available in conjunction with Park Distance Control)	□	□	□
Speed Limit Info incl. No Passing Info (only available in conjunction with navigation system Professional)	□	□	□
Surround View (only available in conjunction with rearview camera)	□	□	□

Light and sight	640i	650i ¹ xDrive ¹	640d
Adaptive LED headlights for high and low beam, incl. high beam assistant, adaptive turning lights, cornering lights, indicators and accent light with LED technology	□	□	□
Ambient Light , incl. illuminated door sill finisher with chrome insert	□	□	□
Adaptive turning lights with variable light distribution and cornering lights, accent light with LED technology	□	□	□
Interior and exterior mirrors:			
– Exterior mirror with automatic anti-glare function, incl. folding function	□	□	□
– Exterior mirror, aspheric, electrically adjustable, heated	■	■	■
– Interior mirror with automatic anti-glare function	■	■	■
Light package , includes reading lights and footwell illumination in the front	■	■	■
Light rings with LED technology , incl. daytime driving and parking light function	■	■	■
Fog lights with LED technology	□	□	□
Rain sensor , incl. headlight activation and windscreen wiper control with fogging sensor	■	■	■
Sun screen:			
– BMW Individual sun protection glazing	□	□	□
– Climate Comfort windscreen ³	□	□	□
– Climate Comfort laminated glass ⁴	□	□	□
– Sun blind for the rear window, electric	□	□	□
– Sun blind for the rear side windows, electric (only in conjunction with sun blind for the rear window)	□	□	□
– Windscreen with grey shade band ⁵	□	□	□
Xenon headlights for high and low beam, incl. automatic headlight range control and headlight washing system	■	■	■

Interior	640i	650i ¹ xDrive ¹	640d
Auxiliary heating with remote control	□	□	□
Ceramic surrounds for controls	□	□	□
Contrasting stitching , ornamental seams complementing the upholstery colour (only in conjunction with leather-covered instrument panel, not with Alcantara/Nappa leather combination)	□	□	□
Instrument panel, door panels:			
– Imitation leather in black	■	■	■
– Exclusive leather in black ³	□	□	□
On-board computer , incl. Check Control and external temperature in the Info Display	■	■	■
Steering wheel:			
– Sport leather steering wheel with multifunction controls (e.g. control of radio and telephone)	■	■	■
– Steering column adjustment, electric	■	■	■
– Steering wheel heating	□	□	□

³ Not in conjunction with windscreen with grey shade band.

⁴ Not in conjunction with BMW Individual sun protection glazing.

⁵ Individual Composition, as shown in brochure, available in Amaro Brown, extended.

Interior	640i	650i ¹ xDrive ¹	640d
Seats/seat comfort:			
– 4+1 seats (rear middle seat without headrest)	■	■	■
– Active seat ventilation for driver and front passenger (only in conjunction with sport or comfort seats)	□	□	□
– Active seats for driver and front passenger (only in conjunction with comfort seats)	□	□	□
– Comfort seats for driver and front passenger	□	□	□
– Lumbar support for driver and front passenger	□	□	□
– Standard seats with seat adjustment, electric, with memory function for driver and front passenger seats	■	■	■
– Seat heating for outer rear seats	□	□	□
– Seat heating for driver and front passenger seats	□	□	□
– Sport seats for driver and front passenger	□	□	□
Ski bag	□	□	□
Vanity mirror in sun shades, left and right, illuminated	■	■	■

Comfort and interior features	640i	650i ¹ xDrive ¹	640d
Alarm system with remote control	□	□	□
Armrest, front, with storage compartment	■	■	■
Automatic air conditioning with 2-zone regulation and extended features	■	■	■
Automatic air conditioning with 4-zone regulation	□	□	□
Comfort Access system (only available in conjunction with Ambient Light)	□	■	■
Cupholder, front	■	■	■
Fogging sensor	■	■	■
Glass roof , electric, with raising function and electric sliding roof screen	□	□	□
Personal Profile , for personalisation of important functions	■	■	■
Smoker's package	□	□	□
Soft Close Automatic for front and rear doors	□	□	□

Entertainment, communication and information	640i	650i ¹ xDrive ¹	640d
Bang & Olufsen High End Surround Sound system , 1200 Watt amplifier output, 16 loudspeakers, Acoustic Lens technology, Dirac Dimensions, aluminium loudspeaker frames with light feature	□	□	□
BMW ConnectedDrive* – Telematics Services:			
– Apps, e.g. to receive worldwide web radio stations (in conjunction with BMW ConnectedApp and iPhone)	□	□	□
– BMW Assist, incl. Real Time Traffic Information (RTTI)	□	□	□
– BMW Online	□	□	□
– BMW TeleServices	■	■	■
– Internet access	□	□	□

Entertainment, communication and information	640i	650i ¹ xDrive ¹	640d
Control Display:			
– 7" Control Display	■	■	■
– 10.2" Control Display (only in conjunction with Navigation system Professional or TV function)	□	□	□
Controller on centre console , incl. direct menu control buttons	■	■	■
Functional bookmarks	■	■	■
HiFi loudspeaker system , 205 Watt amplifier output, 9 loudspeakers	■	■	■
HiFi system Professional , 600 Watt amplifier output, 16 loudspeakers	□	□	□
Info Display:			
– Analogue instruments with Black Panel technology, combined with wide-format LC display (9.2")	■	■	■
Integrated owner's handbook	■	■	■
Navigation system Professional with 10.2" Control Display, hard disk supported system with 12 GB of storage, e.g. for audio files and voice control; RTTI (only in conjunction with BMW Assist*)	□	□	□
Radio/audio:			
– AUX-IN connection in centre console	■	■	■
– DAB tuner for auxiliary reception of digital audio programmes, DAB+ compatible	□	□	□
– DVD-changer for 6 DVDs	□	□	□
– Music interface for smart phones (only in conjunction with USB/audio interface)	□	□	□
– Radio BMW Professional with CD drive, double tuner, MP3 decoder (in conjunction with TV function or navigation system with DVD drive)	■	■	■
– USB/audio interface, incl. Cover Art display	■	■	■
Telephone:			
– Business preparation for mobile phone with Bluetooth interface ¹	□	□	□
TV function for analogue and digital reception (DVB-T)	□	□	□
Voice control system	□	□	□

* May not be available in all countries. Please consult your BMW partner.

¹ For information on recommended devices please go to www.bmw.com/bluetooth

More about BMW



Sheer
Driving Pleasure

www.bmw.com



This flyer describes the models, features and configuration options (standard and optional) available in vehicles delivered by BMW AG for the German market. In other EU countries, there may be deviations from the features and configuration options described in terms of the standard and optional equipment of the individual models. To find out more about the different country versions on offer, please consult your local BMW dealer. Design and equipment subject to change.

© BMW AG, Munich, Germany. No reproduction in whole or in part without the written approval of BMW AG, Munich.

BMW recommends  **EDGE**

111 006 355 20 2 2011 V/B. Printed in Germany 2011.

