

BMW 1 Series
Coupe

www.bmw.com



Sheer
Driving Pleasure



THE BMW 1 SERIES COUPÉ.

MAKES THE CITY'S HEART BEAT FASTER.

BMW EfficientDynamics
Less emissions. More driving pleasure.

International version. Please contact your local dealer for country specific information.

RELISH THE ROAR OF THE ROAD.

As distinctive as the luminous skyline of the metropolis, as intoxicating as a night trawling the hottest clubs and as exuberant as the energy that radiates from the bustling streets – all this urban spirit is incorporated into the BMW 1 Series Coupé. Headlights focussed sharply on the road ahead, athletic contours and rear lights in an innovative design give a taste of the dynamism it can produce. But it's the overall design that makes this car something truly special: the only genuine coupé in its class.





The BMW 1 Series Coupé

JOY STORMS THE CITY.

- 06 Highlights**
An athletic appearance.
- 08 Exterior**
A true coupé.
- 10 Performance**
Inspiring performance.
- 12 The BMW 1 Series Coupé 135i**
Sets the pace.
- 14 BMW ConnectedDrive**
Stay connected.
- 16 Lighting design**
- 18 BMW EfficientDynamics**
Always thinking ahead.
- 20 Curtain up**
The BMW 1 Series Coupé with the Air Curtain.

- 22 Interior**
Quality, appeal, space.
- 26 Fits like a glove**
Sport seats that take seating to the next level.

➤ www.bmw.com/1seriescoupe/highlights

Technology

INNOVATION MEETS INSPIRATION.

- 30 BMW EfficientDynamics**
Technology package for reduced fuel consumption and better performance.
- 32 Engines**
Maximum performance from minimum fuel consumption.
- 34 Chassis and safety**
Systems for greater safety and driving pleasure.
- 38 BMW ConnectedDrive**
Intelligent network for better convenience, infotainment and safety.
- 42 A test drive on the Nürburgring**
The BMW 1 Series Coupé gets the ultimate workout.

➤ www.bmw.com/1seriescoupe/dynamics

Equipment

AS INDIVIDUAL AS YOU ARE.

- 44 Exclusive Edition and Sport Edition**
- 46 Exterior colours**
- 47 Upholstery colours**
- 48 Interior colours and interior trims**
- 50 Standard / Optional equipment**
- 58 M Sport package**
- 59 Original BMW Accessories**
Multifaceted and individual. Exclusively you.

Overview

THE VERSATILITY OF THE BMW 1 SERIES COUPÉ AT A GLANCE.

- 60 Equipment tables**
- 64 Technical data**
- 66 BMW Service and BMW brand experience**
Exclusive offers for BMW customers.

➤ www.bmw.com

Editorial

THE PERFECT TEAM.

Urban life is fast-paced and intense. Downtime is rare. City dwellers are constantly on the go, moving to their own beat, relishing the freedom to act on impulse. Driving to the gym, to meet a date, or out for a night on the town, you want something that stands out from the crowd. A distinctive personality, one that challenges and excites, and is just as keen for adventure as you are. You want the BMW 1 Series Coupé.

The engine growls invitingly, the sporty seats fit like a glove and the sensitive steering makes any curve a thrill – at any speed.

Car and driver swiftly unite to form a well-oiled team. The BMW 1 Series Coupé is an ideal match for adventurous drivers. And its outfit is perfect for any occasion – the white interior trim excellently complements the new upholstery colours and the vibrant paint finishes. The BMW EfficientDynamics technology package fuses driving pleasure with environmental responsibility.

And not only will you experience more in the BMW 1 Series Coupé, you can even tell friends all about it as it happens, via the BMW app that links Facebook and Twitter directly with your car.

➤ www.bmw.com/1seriescoupe

Specifications of model shown: BMW 135i

Engine: BMW TwinPower Turbo six-cylinder in-line petrol engine
Power output: 225 kW (306 hp)
Wheels: 18" light alloy wheels V-spoke 372, mixed tyres
Exterior colour: Non-metallic Alpine White
Upholstery: Boston leather Black
Interior trim: Alpine White

Further information on fuel consumption and CO₂ emissions can be found on pages 64 | 65.

**DON'T FOLLOW FASHION.
SET THE TREND.**

Sportiness leaves a lasting impression.





THE BMW 1 SERIES COUPÉ. THERE'S NOTHING LIKE IT.

The only genuine coupé in its class.

Not only is the BMW 1 Series Coupé more than equal to the fast pace of the city, its distinctive sound is the very essence of urban life. On the street, its looks and moves betray it for what it is – the only genuine coupé in its class. With sporty contours, a long wheelbase and stretched bonnet, you know you're in the presence of an athlete. The expressive lighting design with optional LED elements and accent lighting will dazzle any onlooker. However these lights are fixed on the coupé's favourite sight: the road ahead. Every detail, every line and every shape conveys an impression of irrepressible power, an unstoppable forward surge. The L-shaped rear lights bring this vision of dynamism to a fitting conclusion. Glowing deep red, they seem to open up a window into the heart of the coupé.

www.bmw.com/1seriescoupe/design



SURGE FORWARD. LEAVE THE EVERYDAY BEHIND.

Dynamism in its purest form.

Start the six-cylinder in-line engine. The unmistakable sound of the BMW 135i fills the air, kindling an elation that doesn't let up until the engine powers down. No less than 225 kW (306 hp)¹ is generated by the combined efforts of the TwinScroll turbocharger, High Precision Injection, Double-VANOS camshaft control and Valvetronic. And this power is transformed into a considerable degree of thrust. Meanwhile there is only one word for the powerful sprint that rockets the coupé from 0 to 100 km/h in an unbelievable 5.2 seconds: respect. And the other two petrol engines are equally worthy of admiration. The sporty six-cylinder 125i displays impressively spontaneous power development and revving power, and the four-cylinder in the 120i is remarkable primarily for its superlative efficiency.

The BMW four-cylinder diesel engines demonstrate entirely convincingly that even a thoroughbred high-powered coupé can also be surprisingly efficient. The mighty BMW TwinPower Turbo four-cylinder 123d, the responsive 120d and the most efficient of all, the 118d with average fuel consumption of 4.5 l/100 km, are all exemplary in this regard.

In addition to its efficient performance, the BMW 1 Series Coupé also boasts unique driving characteristics: the ideal, nearly 50:50 weight distribution between the two axes is especially notable. This ratio ensures that the coupé's power is applied in ways that make for great handling. Being behind the wheel is especially enjoyable on winding roads, where the BMW 1 Series Coupé can also get the very best out of another of its key assets: BMW's signature rear-wheel drive.

¹ Further information on fuel consumption and CO₂ emissions can be found on pages 64 I 65.



**SET YOUR PULSE RACING.
TO 135 BPM.**

The BMW 135i with the M Aerodynamics package.

It's obvious from the off that the BMW 135i was born on a racetrack. Its formidable power plant and the optional seven-speed sport automatic transmission with double clutch make this lineage clear, and accelerate the coupé without any loss of traction. But the design elements that come as standard with the M Aerodynamics package also show that the BMW 135i has racing in its genes. Air resistance is no match for the athletic front and rear aprons and dynamic side skirts, which also lend this top-of-the-range BMW 1 Series Coupé even more city-cruising dynamism.

www.bmw.com/1seriescoupe/drivingdynamics



SOCIAL NETWORKING TAKES TO THE ROAD.

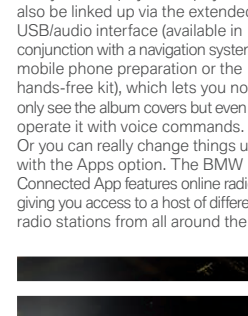
Get connected with
BMW ConnectedDrive*.

If you need to be at the cutting edge of technology, or just have a thing for gadgets, the BMW 1 Series Coupé is packed with digital delights. Make calls, check your e-mails and keep up with what's going on while you're on the road – all thanks to BMW ConnectedDrive. Intelligently connecting the driver with the vehicle, and both with the outside world: for your convenience, safety, information and entertainment.

For example: you can perform a Google local search to find what you need to know about where you're heading. Or you can use the Bluetooth interface to play music files wirelessly from your MP3 player. Your player can also be linked up via the extended USB/audio interface (available in conjunction with a navigation system, mobile phone preparation or the hands-free kit), which lets you not only see the album covers but even operate it with voice commands. Or you can really change things up with the Apps option. The BMW Connected App features online radio, giving you access to a host of different radio stations from all around the

globe – even when you're not on the road in your BMW 1 Series Coupé. Optionally these applications can also be operated via the iDrive Controller – just rotate, tilt and push to scroll through all your entertainment and communication functions. The optional Professional navigation system's high-resolution 8.8" colour display presents content and provides a window into the online world.

* May not be available in all countries. Please consult your BMW partner.





ECLIPSE THE CITY LIGHTS.

Innovative lighting design.

The bright lights of the big city will pale in comparison to these striking front headlights with white accent lights (in conjunction with the optional Xenon Headlights). The light rings, grazed by a sharp defining contour, convey power and brilliance both off and on. The line of accent lights give the coupé a distinctive expression, making it focus intently on the road ahead. At the same time they radiate safety – in particular the optional Adaptive Headlights with cornering lights. The swivel beam headlights probe the street ahead for optimum illumination of the roadway, even when the car is steering into a bend. The High-beam assistant, also available as an option, aids both driver and oncoming traffic by automatically switching between high and low-beam depending on the traffic situation. And the LED lighting design at the rear makes a lasting impression – especially at night.



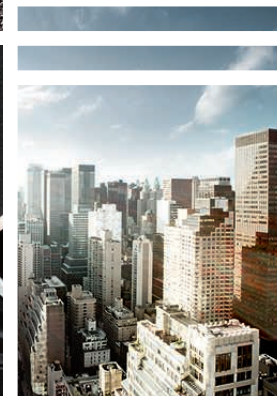
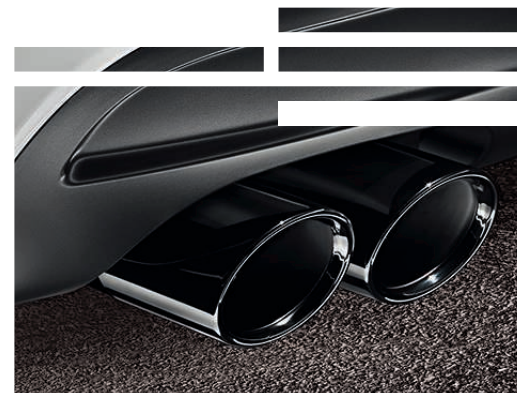
ITS MOST POWERFUL FEATURE – REDUCED FUEL CONSUMPTION.

BMW EfficientDynamics.
Sustainability as standard.

Cars the calibre of the BMW 1 Series Coupé instantly call to mind sheer driving pleasure, winding mountain passes and roads that seem to go on forever. But even when its driving force occasionally has to be curbed by the brakes, the coupé can still make the best of a temporary slow-down – thanks to Brake Energy Regeneration. This technology is just one part of the BMW EfficientDynamics package in the BMW 1 Series Coupé.

Other prime examples include the Auto Start/Stop function, the tyres with reduced rolling-resistance, the Optimum Shift Indicator and the unique Air Curtain (not available with the BMW 135i). All these intelligent technologies make the ride just as dynamic as it is efficient.

But in terms of responsible and economical driving they follow where the engines lead. The top-of-the-range model, the 135i, is at the head of the pack. It comes equipped with an innovative package of technologies, comprising BMW TwinPower Turbo technology, High Precision Injection, Double-VANOS and the Valvetronic fully variable valve control, all of which considerably improve fuel efficiency. Every technology and every detail enable both car and driver to use every drop of fuel more responsibly. For greater efficiency in spite of – or perhaps even because of – the simultaneous boost in dynamics.





CURTAIN UP.

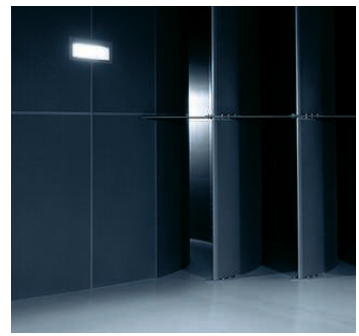
The Air Curtain was developed for the BMW 1 Series Convertible and Coupé in the turbulent roar of a new high-tech wind tunnel. This new technology reduces air resistance at the wheel arches.

In the big wind tunnel at the BMW Group's Aerodynamic Test Centre in Munich, reality is turned inside out. The car stays still while its environment moves around it. A giant rotor eight metres in diameter (pictured left) that consumes up to 4.4 megawatts of power (around 6,000 hp) drives 18,000 cubic metres of air through the closed circuit wind tunnel. Before reaching the test track, the air is forced through a duct to accelerate its speed six-fold – up to 300 km/h. Road conditions are simulated using five thin steel rolling tracks. The wheels of the test vehicle are driven by four narrow belts, while the central ten-metre long belt under the car moves at exactly the same speed. This complex arrangement ensures that the air flow at the car's undercarriage, wheels and wheel arches is almost identical to that of a real driving situation. It's as if the very road itself is being put to the test, in a testing bay 22 m long, 16 m wide and 13 m high. A veritable palace of wind. In practice, a ten percent reduction in air resistance leads to

a good 2.5 percent reduction in fuel consumption. Although the body is already pretty much perfect in terms of aerodynamics, it is only actually responsible for 40 percent of the vehicle's total air resistance. 10 percent is caused by the cooling air for the engine, transmission and brakes, 20 percent results from the vehicle underbody, and the final 30 percent is produced at the wheels and the wheel arches – and in all these areas there is still room for improvement. So the Aerodynamic Test Centre has come up with the Air Curtain, which premiered world-wide in the BMW 1 Series Convertible and Coupé. The Air Curtain protects the front wheels from the headwind. Air taken in through vents in the front apron accelerates as the ducts conducting it narrow, and it is led to the wheel arches where it exits at high speed through narrow slits, covering the outer faces of the wheels like a curtain. This curtain of air acts like an invisible wheel cover, imperceptible yet highly effective.

With the Air Curtain, optimised cooling-air ducts and a smoothed-off undercarriage, the BMW 1 Series Convertible and BMW 1 Series Coupé not only boast an excellent air resistance coefficient but also have reduced uplift. The end result is a reduction in fuel consumption – as well as better vehicle stability.

To the rear of the test track, tall hemispherical partitions guide the air flow back in the opposite direction.



Left: Aerodynamics experiments in the giant testing bay are controlled from the wind tunnel's control room.

Right: The air flow over the BMW 1 Series Coupé is made visible by means of a smoke tracer. The slighter the turbulence created, the lower the air resistance.



EVERY INCH AN ATHLETE.

Detailing for a sportier look.

Nearly time for take-off. You step in, your hands grip the steering wheel, and a glance around lets you see what your pulse is about to feel. Pure energy. The interior of the BMW 1 Series Coupé exudes an unmistakable athleticism, even before the drive. But it also conveys a certain elegance. The optional trim in Alpine White is a particularly notable feature, forming a clear line that seems to flow into the white, gleaming steering wheel trim. Striking chrome inlays on the controls make an impressive statement. Every element of the interior, from the rev counter to the decorative trim, is a homage to the racing heritage of the BMW 1 Series Coupé.

www.bmw.com/1seriescoupe/interiordesign





THE CITY'S MOST EXCLUSIVE VENUE. SEATS FOUR.

Ergonomics and aesthetics in harmony.

You have high standards for your career, your life and your future. We set ourselves equally high standards for the BMW 1 Series Coupé. Impressive, even inspiring quality of this kind originates in the choice of the best materials. Whether you select leather or cloth upholstery, you'll step into an ambiance of instant well-being. Every seam, every detail and every contour displays a high degree of workmanship, equally appreciable by the hand and the eye, and by the driver as well as the passengers who are just as comfortably accommodated in the back as up front. After all, this coupé is a bona fide 2+2 seater. So you can share this intensely pleasurable driving experience with friends, for action-packed days and scintillating nights.

And if you want to boost the coupé's athletic attitude still further, you can opt for sport seats (standard with the BMW 135i) that give the driver and

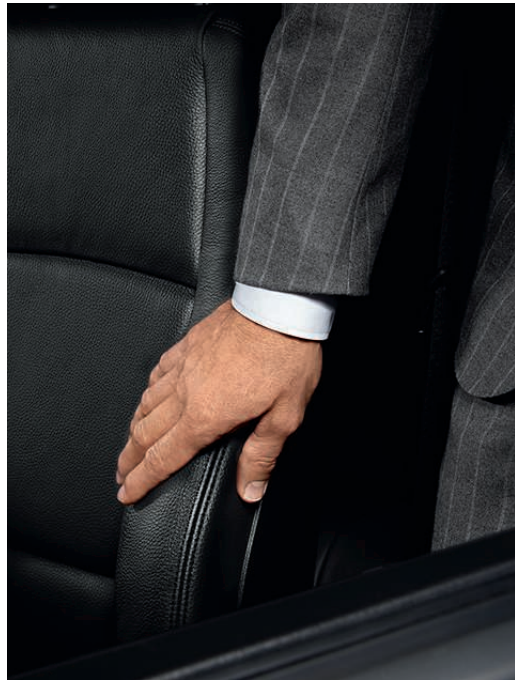
front passenger optimum lateral support. Add to this a myriad of features that combine great looks with ergonomic comfort to make you and your passengers feel right at home.





FITS LIKE
A GLOVE.

BMW seats are regarded as the gold standard of comfort, safety and sportiness. Even at high speeds, drivers will enjoy complete control and outstanding comfort with the optional sport seats.



**SPORT SEATS WILL
EVOLVE TO RESEMBLE
SEAT SHELLS.
LIGHTER, THINNER,
BUT NO LESS
COMFORTABLE.**

In a BMW, driving is an intense dialogue between car and driver. The hands direct the wheels via the steering wheel. The feet communicate closely with the engine via the accelerator. And the eyes are guided instinctively towards the instrument panel. These precise connections work so well because the driver is perfectly integrated and can operate all the vehicle functions intuitively. Ergonomics and an optimum seating position are key, so a seat that meets every demand is essential. BMW seats are regarded by the experts as the gold standard in terms of comfort, safety and sportiness.

To take just one example: maximum safety is ensured by the side airbags stowed in the seatbacks and by the crash-active headrests. Drivers of all shapes and sizes enjoy the flexible adjustment systems on BMW seats: in particular, people of especially tall or petite stature relish the broad height and length adjustment range. There is also an adjustable thigh support, e.g. with the sport seats, for an even more finely tuned seating position. The optional, customisable lumbar support against the lower spine is an outstanding comfort feature, bolstering the pelvis and holding the spine in its natural S shape.

The optional BMW sport seats – also part of the BMW M Sport package – are the result of particularly intensive research and development. They are more firmly cushioned with closer body-hugging contours. Adjustable side supports bolster the torso when tearing round bends, so the driver can move more subtly and steer with greater sensitivity, without having to grip tightly or lean on the wheel.

But despite having reached this peak of sportiness and ergonomics, BMW is even now working on the sport seats of the future. The aim is to make seats that are lighter and less bulky, through the use of innovative structures from the field of bionics as well as newly developed lightweight



The optional sport seats afford a seating position that makes it easy to drive fast while remaining physically completely at ease. Adjustable side supports bolster the torso, so the driver can steer safely and sensitively even when racing round bends.

materials and the intelligent integration of vehicle functions. Less weight facilitates a reduction in emissions and reduced volume means there is more room for the passengers. The minimalist, almost skeletal seat shells in the BMW Vision EfficientDynamics concept sports car – the

precursor to the upcoming BMW i8 series production model – offer a first glimpse of what the future holds. Although these seats appear simple, the few drivers who have so far been lucky enough to experience this pioneering automobile were amazed at how comfortable they are.



The Air Curtain is invisible yet highly efficient. Air streams through narrow vents in the front apron, is accelerated and forced out at high speed across the front wheels, where it creates a curtain of air over the outer face of the wheels. This innovation reduces air resistance, which in turn leads to an improvement in stability as well as a reduction in fuel consumption. An added bonus is that the intakes lend the car's front apron an even sportier note.

BMW EfficientDynamics

Less emissions. More driving pleasure.

BMW was one of the first manufacturers to pursue the goal of efficient drive technologies, as part of its multi-award-winning sustainability strategy. BMW EfficientDynamics, included as standard, is a comprehensive technology package designed to reduce fuel consumption and emissions – while simultaneously enhancing dynamic performance. A winner of many technology awards, it has enabled the BMW Group to reduce the CO₂ emissions of its European new-vehicle fleet by about 30% since 1995. 39 models¹ currently produce less than 140 g of CO₂ per kilometre. The BMW Group intends to achieve a further 25% reduction in CO₂ emissions by 2020.

BMW EFFICIENT DYNAMICS – MAKING A LITTLE GO A LONG WAY.

Different paths to the same destination: unmistakable BMW driving pleasure. Under the umbrella of the BMW EfficientDynamics project, BMW is continuously developing innovative systems that will bring us closer to the long-term goal of emission-free mobility. This BMW initiative for more driving pleasure is based on several pillars:

Technology package. The optimisation of vehicles powered by conventional diesel and petrol engines continues apace. A comprehensive technology package enables the reduction of fuel consumption and emissions, while at the same time increasing power output and driving enjoyment. These advances are based on innovations such as BMW TwinPower Turbo technology, the Auto Start/Stop function, Brake Energy Regeneration, and many others.

BMW ActiveHybrid. The BMW range includes impressive hybrid models, such as the new BMW ActiveHybrid 3² and BMW ActiveHybrid 5, and the BMW ActiveHybrid 7. All of these volume models combine high efficiency with superior dynamic performance.

BMW ActiveE. Since 2011, there has been a new type of dynamism on the road: the BMW ActiveE. Powered by electricity alone, it is manufactured in a small production run, as part of a pilot project. In this way, BMW is preparing the way for the emission-free mobility of tomorrow.

BMW Hydrogen. BMW is continuing its research into alternative drive concepts for the future, such as hydrogen drive.

BMW i. In line with the BMW EfficientDynamics idea, the BMW i brand is developing visionary new vehicle concepts such as the BMW i3 (Megacity Vehicle) and the BMW i8. While including existing BMW EfficientDynamics technologies, these vehicles also use new lightweight materials such as CFRP and electric drive systems with powerful battery technology such as BMW eDrive. With a focus on sustainability across the entire value-added chain and a range of supporting mobility services, BMW i is redefining individual mobility.

For further information see www.bmw-i.com

BMW EFFICIENT DYNAMICS FEATURES IN THE BMW 1 SERIES COUPÉ AT A GLANCE.

Air Curtain. Narrow openings on the left and right of the front apron direct inflowing air into two sealed channels. These run along the inside of the front apron to the wheel arches, where the air re-emerges and is steered at high speed through a narrow opening close to the external surface of the wheel. The escaping air streams down the sides of the front wheels, thus minimising air turbulence around the wheels and wheel arches, thereby further reducing fuel consumption (not available with 135i).

Auto Start/Stop function. BMW four-cylinder engines with a six-speed manual transmission automatically shut down when the driver stops, goes into neutral, or takes their foot off the clutch – for example at a red light or in a jam. The engine restarts as soon as the clutch is activated again. This innovation significantly reduces fuel consumption, especially in city traffic.

High Precision Injection. In a BMW, the injectors are located directly above the spark plugs. They inject fuel with extreme precision and pressure to ensure particularly efficient combustion.

BMW TwinPower Turbo technology. This innovative exhaust gas turbo charger efficiently recaptures the energy present in the exhaust through the use of the double-flow exhaust system of the TwinScroll charger (135i). Together with Valvetronic fully variable valve control and High Precision Injection, this technology significantly reduces fuel consumption – while noticeably increasing performance across all engine speeds.

Brake Energy Regeneration. Brake Energy Regeneration means that the generator (alternator) usually only generates electricity when the driver brakes or takes their foot off the accelerator – previously unused kinetic energy is transformed in coasting mode into electrical energy before being fed into the battery.

Electric Power Steering. In comparison with conventional, hydraulic steering systems, the electric power steering support only uses energy during actual steering. When driving straight ahead, the electronic motor is inactive.

Tyres with reduced rolling-resistance. While the car is in motion, the tyres are constantly changing shape, using up energy and fuel. Tyres with reduced rolling-resistance have an improved design and use special materials for their road treads and side walls, which reduces deformation.

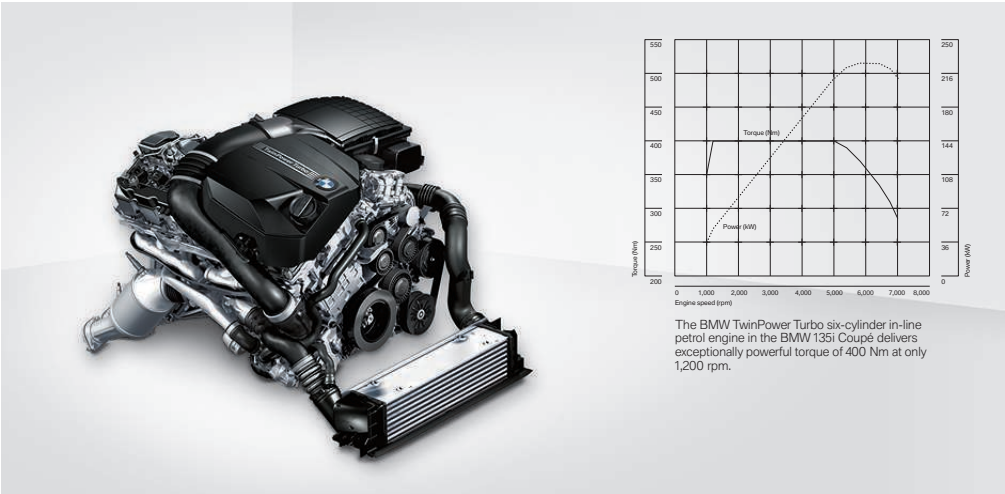
Optimum Shift Indicator. Timely gear shifts are one of the most effective ways to save fuel. This is where the Optimum Shift Indicator in conjunction with the six-speed manual transmission can help. It shows the driver what gear to use in order to drive more efficiently.

¹ Status 10/2011.

² Due to become available from 09/2012.

IT ALL REVOLVES AROUND JOY. SEVERAL THOUSAND TIMES PER MINUTE.

The petrol engines. Performance, power delivery and high revving distinguish each and every BMW engine. And of course, every engine available with the BMW 1 Series Coupé adheres to the BMW EfficientDynamics philosophy. They strive to bring performance to the road with maximum efficiency, while simultaneously reducing fuel consumption and CO₂ emissions to a minimum. Regardless of which engine you opt for, you're guaranteed maximum driving pleasure combined with outstanding efficiency.

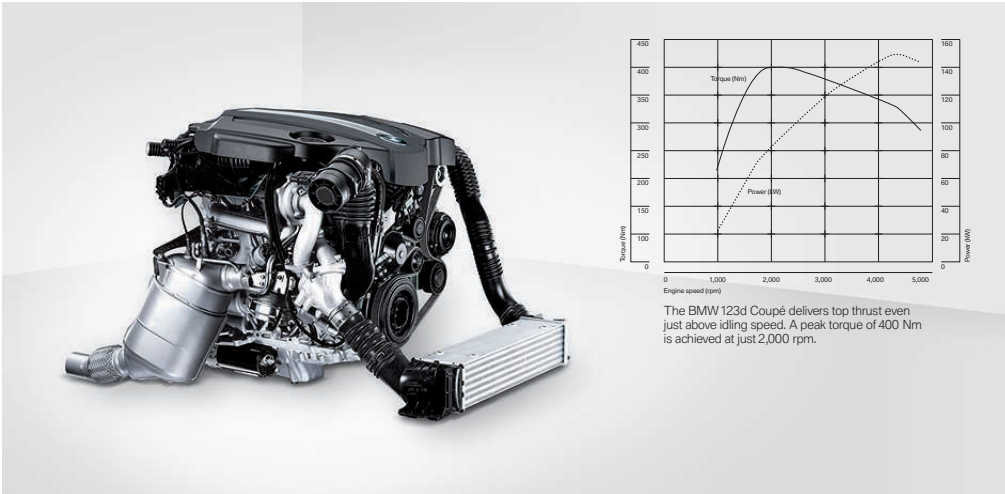


BMW 135i. The newly developed BMW TwinPower Turbo six-cylinder in-line petrol engine is the first in its class to combine a TwinScroll turbocharger with High Precision Injection, Double-VANOS and Valvetronic fully variable valve control. This innovation package significantly reduces fuel consumption and also delivers an impressive performance: 225 kW (306 hp)¹, 400 Nm across the 1,200 to 5,000 rpm range, acceleration from 0 to 100 km/h in 5.2 seconds (in conjunction with the seven-speed sport automatic transmission with double clutch), a top speed of 250 km/h – and an average fuel consumption of just 8.5 l/100 km. With this combination of sense and sensibility the BMW 135i is in a class of its own.

BMW 125i. This high-revving BMW six-cylinder in-line petrol engine offers impressive dynamic power delivery. It features the fully variable valve control system Valvetronic, which supplies the engine with air more efficiently – particularly in the moderate load range – which results in more power and less fuel consumption. Brake Energy Regeneration also contributes to efficient fuel management. The BMW 125i consumes on average 8.1 l/100 km and its 3.0 litre engine capacity produces a max. torque of 270 Nm even at 2,500 rpm. A total engine output of 160 kW (218 hp)¹ powers the vehicle from 0 to 100 km/h in 6.4 seconds. Top speed: 245 km/h.

BMW 120i. This BMW four-cylinder petrol engine generates 125 kW (170 hp)¹ from its 2.0 litre capacity. Acceleration from 0 to 100 km/h takes just 7.8 seconds and its top speed is 224 km/h. The engine is incredibly economical, particularly in the moderate load range, thanks to High Precision Injection and a thinning of the petrol-air mixture in the combustion chamber. Fuel consumption is reduced even further by a whole host of EfficientDynamics technologies, so that on average, the BMW 120i Coupé only requires 6.5 l for every 100 km.

The diesel engines. The three diesel models of the BMW 1 Series Coupé captivate drivers with their cultivated power and unparalleled efficiency. The latest CommonRail technology combines smooth, economical running with spontaneous acceleration and enormously enjoyable torque. All diesel models feature lightweight aluminium construction and are equipped with a zero-maintenance particle filter as standard.



BMW 123d. The first ever BMW TwinPower Turbo four-cylinder diesel engine to feature Variable Twin Turbo, with two parallel turbochargers of different sizes. The first and smaller charger ensures instantaneous engine response at lower revs. The second, larger turbocharger provides a further boost to performance at higher revs. A crankcase constructed completely from aluminium also improves efficiency. The result is a unique power-to-consumption ratio. Expressed in figures: 150 kW (204 hp)¹, 400 Nm, 0 to 100 km/h in 7.0 seconds and a top speed of 238 km/h – with an average fuel consumption of just 5.1 l/100 km.

BMW 120d. The 120d's 2.0 litre four-cylinder diesel engine in the BMW 1 Series Coupé displays dynamic performance yet incredible smoothness. With its impressive torque of 350 Nm at 1,750 rpm and a power output of 130 kW (177 hp)¹, it has a top speed of 228 km/h and reaches the 100 km/h mark from a standstill in just 7.6 seconds. Steady injection pressure combined with BMW EfficientDynamics technologies result in an outstanding average fuel consumption level of just 4.7 l/100 km.

BMW 118d. The 118d accelerates powerfully, flexibly and smoothly with an output of 105 kW (143 hp)¹ and features a maximum torque of 300 Nm. From a standstill it reaches 100 km/h in 9.0 seconds and achieves a top speed of 210 km/h. What's more, this efficiency expert consumes on average just 4.5 l/100 km.

¹Further information on fuel consumption and CO₂ emissions can be found on pages 64 | 65.



Pure driving dynamics – it's a quality embodied by every single BMW without exception. And the technical basis for this thrilling driving experience lies in the suspension. It ensures optimal contact with the road surface and ideal road holding in every situation – the result of its 50:50 weight distribution and an array of seamlessly combined innovative components. BMW engineers are continually re-inventing and refining those classic BMW driving dynamics to ensure that every BMW chassis puts the driver in direct contact with the vehicle and the passion for dynamic driving – while also providing the highest levels of safety and comfort.



THE BEST FOUNDATION FOR TOP DRIVING DYNAMICS. A BRILLIANT SUSPENSION.

Optimised road holding is crucial to a truly dynamic driving experience. In the BMW 1 Series Coupé, this is achieved by a weight distribution of almost 50:50 between the front and rear axles, as well as neutral steering behaviour, a high level of directional stability and fantastic traction. Read on to find out more.



Lightweight suspension. In the BMW 1 Series Coupé, the chassis is perfectly harmonised with the engine and transmission. You can feel it in the precision of the steering, the agile handling and superb vibration and acoustic characteristics – and in how the car reacts to the road. The front suspension consists of a lightweight double-joint trailing-arm axle, which combines maximum strength with minimum weight. Together with the multi-arm rear axle and BMW's signature rear-wheel drive, superbly sporty handling is a given. It is characterised by a small turning radius, a high level of directional stability, dynamic cornering and optimum traction in all situations.

50:50 weight distribution. The front and rear axles each carry almost exactly half of the car's weight – these balanced masses help to maintain great directional stability. With its first-class suspension and DSC (Dynamic Stability Control) provided as standard, the BMW 1 Series Coupé remains stable right up to the limits.

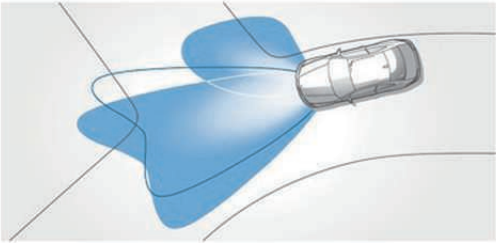
Body. In the BMW 1 Series Coupé all components are designed to provide a high level of passenger safety. The high-rigidity passenger cabin is constructed to keep all passengers fully protected. The body only yields in precisely defined areas at the front and rear. Should an accident occur, these deformation zones are capable of absorbing a large amount of the impact, thus minimising the severity of the collision as it happens.

Active Steering. This system adapts the steering transmission and power steering characteristics to the vehicle's current speed (optionally available for the 125i and 135i). So you can enjoy increased agility on winding roads, more safety at higher speeds and greater flexibility when parking. If the car begins to swerve while braking, for example, Active Steering compensates by means of autonomous, targeted steering adjustments no matter what the road surface. That means the BMW 1 Series Coupé brakes more responsively and always stays safely on track.

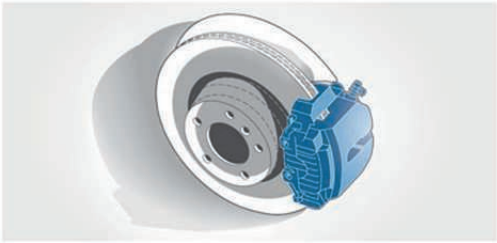
Seven-speed sport automatic transmission with double clutch. This optional transmission dynamically and efficiently transfers the BMW 135i Coupé's engine power to the road. The seven gears are split across two separate transmission set-ups, meaning you can shift gear with no loss of traction. Switching between gears takes just a few milliseconds and the permanent engine connection facilitates outstanding acceleration that will take your breath away. The automatic mode quickly and precisely selects the most efficient gear to considerably lower fuel consumption. The barely perceptible gear changes markedly improve passenger comfort.

YOU CAN'T CRUISE ON EVERY ROAD. BUT YOU CAN IN EVERY BMW.

The BMW 1 Series Coupé surrounds you with cutting-edge technologies for every eventuality. Behind the wheel, you'll enjoy superior handling – no matter where the road takes you.



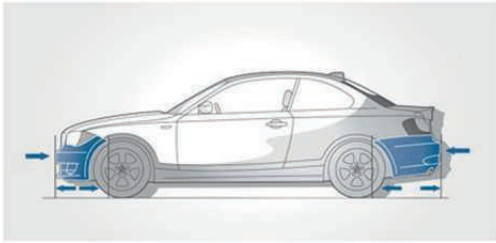
□ **Adaptive Headlights** with variable light distribution, incl. cornering lights, optimally illuminate bends by electro-mechanically swivelling the headlights along the horizontal axis when the driver turns the wheel.



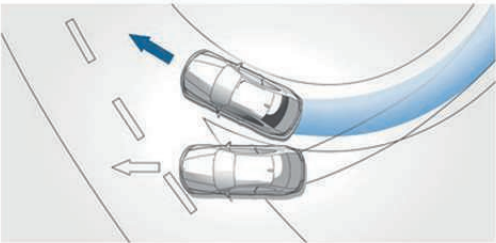
■ **Disc brakes** (special high-performance brakes on the 135i) on all wheels specially designed to ensure maximum driving safety and easy operation. The braking system combines short braking distances and superior immobility at a standstill.



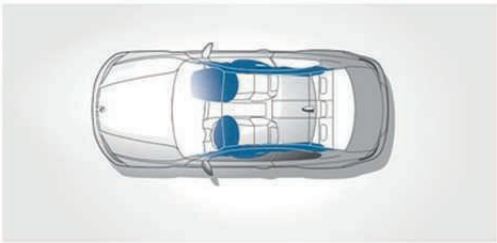
■ **BMW restraint system** for driver and front passenger. A combination of three-point seatbelts, pyrotechnic belt tensioners and belt force limiters provides the best possible restraint in the event of a collision.



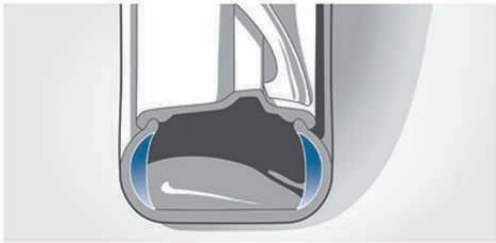
■ **Bumpers** absorb impacts at up to 4 km/h without damage. Special deformation zones at the front and rear absorb forces up to 15 km/h.



■ **Dynamic Stability Control (DSC)**, incl. CBC and additional functions – e.g. Brake Assist – for the 125i and 135i. DSC recognises the risk of swerving before it occurs and stabilises the car in milliseconds. Traction Mode (DTC) is a sub-function which allows increased wheel slip in order to optimise propulsive power in certain situations and enable a sportier style of driving.



■ **Airbags.** In a BMW, all safety features complement each other perfectly. Six airbags are installed for precise protection – driver and front passenger airbags, continuous head airbags in the front and rear, as well as side airbags integrated in the front seat backrests.



□ **Runflat tyres.** Reinforced side walls prevent the tyres from completely collapsing or loosening from the rim if the air pressure drops (standard with all 17" light alloy wheels and larger).
■ **Runflat indicator** minimises the risks associated with tyre defects. The system detects air pressure changes in the tyres and then warns the driver by activating a light.



□ **Servotronic** adjusts the steering power to suit the current speed. It ensures steering transmission that is direct, precise and won't tire you out. In addition, Servotronic makes your drive more comfortable by reducing the effort required to turn the wheel and providing maximum manoeuvrability while parking.



BMW ConnectedDrive

In touch with your world.

Our world is becoming more connected every day. BMW drivers are used to the fact that their vehicle and their world are connected – that they can request information, communicate via telephone or e-mail and always be up to date while they're on the go. The BMW ConnectedDrive concept encompasses all the services and innovative technologies that network BMW vehicles and their passengers with the world outside, including the traffic around.



Revolutionising mobile networking. The BMW Vision ConnectedDrive is a visionary roadster with a design that exhilarates from the very first glance. Its dynamic, flowing contours lead the eye from the striking front and along the stretched bonnet of this extraordinary vehicle – a synthesis of exterior and interior. Each of the three levels of the interior stands for one of three BMW ConnectedDrive components – convenience, infotainment and safety. The accompanying functions and controls are illuminated in different colours, which literally radiate a pulsating array of information. More information about this concept vehicle and further research projects is available in the new Future Lab.

➤ www.bmw.com/futurelab

BMW CONNECTED DRIVE* – FOR MORE CONVENIENCE, INFOTAINMENT AND SAFETY.

Wherever your journey may lead, you can stay in touch with BMW ConnectedDrive. Its innovative functions provide optimum integration between the driver, vehicle and the world outside – anytime, anywhere. Here is an introduction to just a few of the features for more convenience, infotainment and safety. Further information on all the benefits BMW ConnectedDrive has to offer is available online at www.bmw.com/ConnectedDrive

Convenience. These ingenious ConnectedDrive innovations include helpful services such as the rain sensor and automatic headlight activation. So you're always that much more relaxed when you're in your BMW.



Comfort Access, including exterior door handle illumination. This system allows you to unlock, lock and start your BMW without inserting the key. All you need is the remote control in your pocket, which transmits an identification signal to the car. Simply touch the door handle or boot lid and the BMW unlocks or locks as required. Similarly, a touch of the Start/Stop button is all it takes to start the engine.



Rain sensor and automatic headlight activation. These features make driving your BMW even more comfortable. The rain sensor automatically controls the wipers, while automatic headlight activation switches the headlights on or off depending on ambient light conditions.

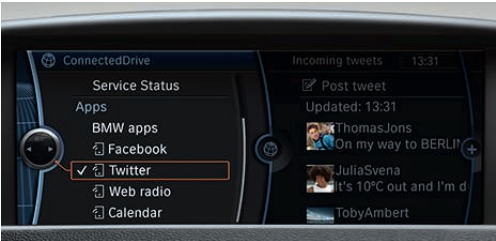


Park Distance Control (PDC). This allows for easy parking and manoeuvring in confined spaces. Acoustic signals and a visual indicator in the Control Display tell you when the front or rear of the vehicle is approaching an object. Distances are measured by ultrasound sensors in the bumpers.

➤ www.bmw.com/1seriescoupe/connectivity
➤ www.bmw.com/ConnectedDrive

* May not be available in all countries. Please consult your BMW partner.

Infotainment. The infotainment package encompasses services with a technological or media orientation, such as the USB interface with extended functionality, that supply drivers with the same level of information and entertainment that they would find at home or in the office.



BMW Connected App. For the first time, you can now use apps in your BMW. With the Apps option, an iPhone and the free BMW Connected App from the Apple App Store, you're no longer limited to just listening to local radio, your calendar is with you all the time and you're always in contact with your friends. Using the iDrive system, you can easily select web radio stations from around the world. You can also call up the latest status updates from your Facebook or Twitter accounts and view upcoming appointments on the Control Display, or even have them read to you through the audio system's speakers. And that's just the beginning, more functions and apps will follow in the future.

USB/audio interface with extended functionality. In combination with the optional USB/audio interface and the original iPod USB cable, your BMW is able to display the album cover for the currently played title in the Control Display. This "Cover Art" display adds the cover for any song and album, for fast and convenient reference (function also available for other music players). The USB/audio interface also makes it easy to update a part of the vehicle software in your BMW via a USB stick. This provides access to the complete range of functions supported by new mobile phone and music player models.¹

PlugIn. With your iPhone and the Apps option, you'll always be up to date – and of course this applies equally when you use it inside your BMW. Through PlugIn, you have direct and easy access to all menu items, you can use advanced functions such as the playback of Genius mixes and display album covers. And whenever you add iPod updates to your iPhone, they can be used in your car immediately via BMW ConnectedDrive. Thanks to this interface technology, the use of mobile devices in cars is innovative, more convenient and safer.

Internet preparation. Whether you need to check the balance in your bank account, place a bid on eBay or look something up in Wikipedia, the BMW ConnectedDrive Internet option ensures that you can do whatever you need to do online. To enable you to surf to your heart's content, the iDrive Controller in the centre console doubles as a computer mouse.

Safety. These BMW ConnectedDrive services are safety technologies that make a significant contribution to reducing the risks that road traffic poses to BMW drivers and their passengers – such as the optional High-beam assistant.



High-beam assistant. Avoid dazzling other road users – the optional High-beam assistant detects sources of light in the vehicle's vicinity and switches between high and low beam as traffic allows. When the system is active, an image sensor behind the rear-view mirror monitors traffic and light conditions. The assistant function then uses these sensor images to decide whether or not the high-beam lights can be switched on. The high-beam is switched to low any time traffic is detected ahead or behind, and when ambient light is sufficient without.

¹ For information on software updates please see www.bmw.com/update

TESTED IN GREEN HELL.

BMW trials and tunes every model on the Nürburgring, and the BMW 135i Coupé has had to prove its athletic mettle here too.



BMW test pilots completed this world-renowned racing circuit in approximately eight and a half minutes. The track hurtles past red and white side-bumpers, races around steep carousels and winds through 173 curves. The Nürburgring is an exceptional track and pilots thoroughly relish its ever-changing attractions, even though they also fear its unpredictable moods. That is why Jackie Stewart coined the name 'Green Hell'. The unique emotion of the Nürburgring is echoed in every BMW, to be felt by every driver. Every year BMW's engineers dedicate weeks to the track, putting the cars through their paces and tuning their responses. It's not about setting records, but about consistently fast laps – sometimes right up to the limit. A key element of the Nordschleife circuits is endurance testing, and no track or test facility is as well suited as the Nürburgring. Just one circuit of the Nürburgring with its ups and downs, wildly

individual loops, variety of road surfaces, and fast and slow sections has the same effect on the vehicle as a whole day of everyday driving.

Everything BMW test pilots experienced on these Nordschleife sprints has been incorporated into the BMW 1 Series Coupé. In its reliability and even more in its superior driving dynamics. Agility, as well as the engine output, is what this is all about. The fleet and forceful 135i Coupé easily outpaces supposedly more powerful sports cars on the loops and hairpins of the Nordschleife. These competitors are held back by their excess weight, overburdened front axles or lack of grip on the drive wheels. What they lack in fact is the perfectly balanced design of the BMW 135i Coupé.

The rear wheels, driven by BMW TwinPower Turbo technology and the electronically controlled rear axle differential locking function cleanly transfer the whole of the engine's power onto the asphalt. Accelerating out of the narrow, slanted coils at the Nürburgring, the BMW 1 Series Coupé never loses an inch of traction. The optional double clutch transmission makes for faster and sportier gear shifts than any other system. Disciples of dynamism will thrill to the lightning-fast roar during fast downshifting.

The unique design of the BMW 1 Series Coupé places the engine partly behind the front axle under the stretched bonnet. This is how our engineers achieved perfect weight distribution between the two axles. In the compact coupé, cornering is fast but controlled. On the Nürburgring drivers were quick to praise the neutral, sensitive and accurate steering that results when the front wheels aren't engaged in the transfer of propulsive force.

Experience just a few laps as driven by a BMW test pilot and you'll rapidly become aware of what driving dynamism truly means, and of just what has gone into the sporty concept behind this eager coupé. The BMW 1 Series Coupé is a



natural on the Nordschleife. And you'll know it at every bend you take.



Exclusive Edition.

Turn heads with an exclusive expression of your individuality. The new Exclusive Edition of the BMW 1 Series Coupé will appeal to your sense of style the moment you first lay eyes on it. It combines the elegant Chrome Line exterior trim with exclusive design features such as the exterior mirror caps in matt Oxide Silver and the double kidney grille with chrome-plated slats. The vehicle's distinctive character is further enhanced by the optionally available exclusive Mineral Grey metallic paint finish, as well as five other stylish colours. The chrome-look tailpipe trim¹ and optional 18" light alloy wheels in a V-spoke 217 design (standard with 135i) with mixed tyres finish off the Exclusive Edition's striking appearance. With style like this, the world will pause to watch you drive by.



■ **Sport leather steering wheel with multifunction buttons** (diameter 369 mm), chrome inlay, three spokes, with multifunction buttons for the remote control of radio and (optional) telephone functions.



□ **18" light alloy wheels V-spoke 217** with mixed runflat tyres, front 7.5 J x 18 with 215/40 R 18 tyres, rear 8.5 J x 18 with 245/35 R 18 tyres (standard with 135i).

Only outstanding details can turn a space into an experience. Such details abound in the new Exclusive Edition of the BMW 1 Series Coupé. Like, for example, the new sport leather steering wheel with multifunction buttons, or the chrome-plated door sill finishers with the 'BMW Edition' logo. The interior also features the finest materials, such as the exclusive new Pearl Grey Boston leather upholstery with grey contrast stitching and seat heating for the driver and front passenger. The Exclusive Edition is rounded off by the BMW Individual roofliner in Anthracite, the chrome handbrake grip, floor mats with Pearl Grey piping and the optional Finesse Anthracite fine-wood interior trim.

¹ BMW 135i and 123d tailpipe trims in black chrome.



Sport Edition.

City life moves at its own pace. And the dynamic new Sport Edition of the BMW 1 Series Coupé is well equipped to keep up with your urban lifestyle. Its captivating appearance is enhanced by the optionally available exclusive Carbon Black metallic paint finish or one of five other colours, together with the new, optional Ferric Grey 18" M light alloy wheels in a Double-spoke 313 M design (standard for 135i) with mixed tyres. The M Sport package with black exterior mirror caps and high-gloss Black kidney grille slats emphasise the vehicle's athletic character. Further hallmarks of the Sport Edition include the BMW Individual High-Gloss Shadow Line, Black Line rear lights and the chrome-plated tailpipe trim¹.



□ **18" M light alloy wheels Double-spoke 208 M** with mixed runflat tyres, front 7.5 J x 18 with 215/40 R 18 tyres, rear 8.5 J x 18 with 245/35 R 18 tyres (exclusively available with 135i).

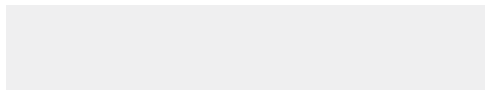


□ **18" M light alloy wheels Double-spoke 313 M** in Ferric Grey with mixed runflat tyres, front 7.5 J x 18 with 215/40 R 18 tyres, rear 8.5 J x 18 with 245/35 R 18 tyres (standard with 135i).

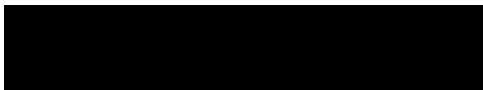
Life gravitates towards the cities. The new Sport Edition of the BMW 1 Series Coupé is built for city life. Its distinctly athletic character is expressed in a range of interior features, such as the M leather steering wheel with multifunction buttons and the Aluminium Glacier Silver interior trim. The stainless steel pedals and Aluminium M footrest perfectly complement the Flashpoint cloth/Sensatec upholstery, as well as the optional Black Boston leather with blue contrast stitching. From the moment you open the door to reveal the chrome-plated door sill finishers featuring the 'BMW Edition' logo, you'll know you're in for a thrilling ride.



Exterior colours.



■ **Non-metallic** 300 Alpine White



■ **Non-metallic** 668 Black



□ **B39 Mineral Grey**, metallic⁵



□ **416 Carbon Black**, metallic⁶



□ **Metallic** 354 Titanium Silver



□ **Metallic** A72 Cashmere Silver



□ **Metallic** 475 Black Sapphire⁷



□ **Metallic** A52 Space Grey



□ **Metallic** 896 Bluewater



□ **Metallic** A76 Deep Sea Blue



□ **Metallic** 381 Le Mans Blue⁶

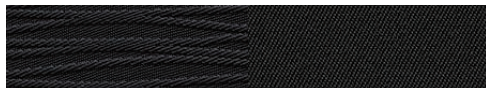


□ **Metallic** A82 Vermilion Red

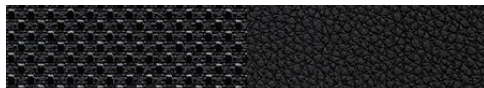
The following pages show the colours and materials available for the BMW 1 Series Coupé. Use them to identify your favourite colours, or compare various combinations. These colour samples are intended as an initial guide, however experience has shown that printed versions of paint, upholstery and

interior trim colours cannot in all cases faithfully reproduce the colour appearance of the originals. We therefore recommend that you consult your BMW partner on your preferred colour choices, who will be happy to show you original samples and assist you with special requests.

Upholstery colours.



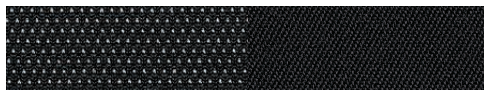
■ **Elekra cloth EAAT Anthracite²**



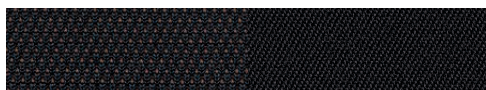
□ **Flashpoint cloth/Sensatec leatherette GCSW Black¹**



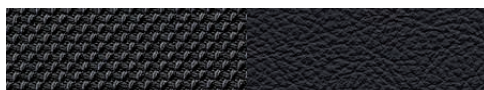
□ **Flashpoint cloth/Sensatec leatherette GCNL with blue contrast stitching⁶**



□ **Network cloth AUAT Anthracite³**



□ **Network cloth AUDR Magma Brown²,³**



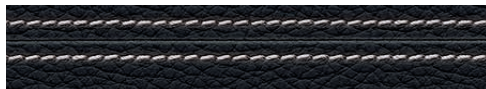
□ **Pearlpoint cloth/leather upholstery FHAT Anthracite⁴**



□ **Boston leather LWSW Black**



□ **LWNH Pearl Grey with Grey stitching, Boston leather⁵**



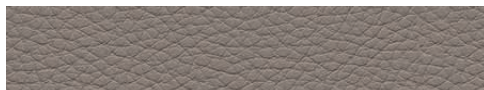
□ **LWNM Black with White stitching, Boston leather⁵**



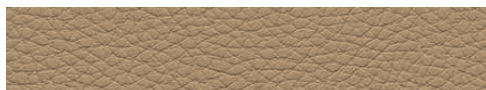
□ **LWNL Black with Blue stitching, Boston leather⁶**



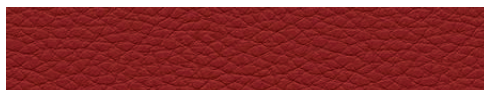
□ **Boston leather LWCX Oyster**



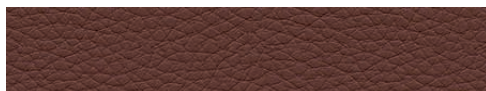
□ **Boston leather LWA5 Beige**



□ **Boston leather LWB4 Savanna Beige**



□ **Boston leather LWD1 Coral Red**



□ **Boston leather LWB8 Terra**

¹ Only available in conjunction with M Sport package.

² Not available in conjunction with sport seats.

³ Standard with the 125i, 135i and 123d.

⁴ Only available in conjunction with sport seats.

⁵ Only available in conjunction with Exclusive Edition.

⁶ Only available in conjunction with Sport Edition.

⁷ Not available in conjunction with M Sport package.

Interior colours.



Black



Beige

Interior trims.



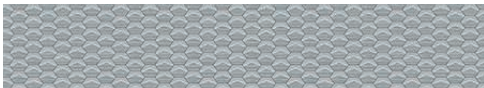
■ 4CG Satin Silver, matt



□ 4AT Black, high-gloss



□ 4DH Alpine White

□ 4B3 Brushed Aluminium with accent lines^{1,8}■ 4MG Aluminium Glacier Silver⁷

□ 4A3 Fine-wood trim Burr Walnut, light



□ 4CE Fine-wood trim Finline Anthracite

¹ Standard with 135i.² Not available in conjunction with sport seats, standard with 120i, 118d and 120d.³ Standard with 125i, 135i and 123d.⁴ Only available in conjunction with sport seats.⁵ Boston leather includes seat surfaces, headrests for front and rear seats.⁶ Pearlpoint upholstery includes the inner side sections of the seat surfaces, backrests and headrests in leather, with the centre sections of the seat surfaces, backrests and side sections of the headrests in cloth.⁷ Only available in conjunction with M Sport package and Sport Edition.⁸ Standard in conjunction with Exclusive Edition.⁹ Only available in conjunction with Exclusive Edition.

Combinations.

	Upholstery colour													
	BMW 1 Series Coupé										Exclusive Edition	Sport Edition	M Sport package	
Interior colours	Elektra cloth ²	Network cloth ³	Pearl-point cloth/leather upholstery ^{4,6}	Boston leather ⁵							Boston leather ⁴	Flash-point cloth/Sensatec leatherette ⁴	Boston leather ^{4,5}	Flash-point cloth/Sensatec leatherette ⁴
Standard seats	•	•	•	—	•	•	•	•	•	•	•	•	—	—
Sport seats ¹	—	•	—	•	•	•	•	•	•	•	•	•	•	•
Upholstery colour	Anthraxite	Anthraxite	Magma Brown	Anthraxite/Black	Black	Oyster	Beige	Savanna Beige	Coral Red	Terra	Pearl Grey/Grey	Black/White	Black/Blue	Black/Blue
Interior colour	Black	Black	Black	Black	Black	Black	Beige	Black	Black	Black	Black	Black	Black	Black
Exterior colours														
Non-metallic Alpine White		•	•	•	•	•	•	•	•	•	•	•	•	•
Non-metallic Black		•	•	•	•	•	•	•	•	•	—	—	—	—
Metallic Mineral Grey ⁹		—	—	—	—	—	—	—	—	—	•	•	—	—
Metallic Carbon Black ⁷		—	—	—	—	—	—	—	—	—	•	•	•	•
Metallic Titanium Silver		•	•	•	•	•	•	•	•	•	•	•	•	•
Metallic Cashmere Silver		•	•	•	•	•	•	•	•	•	•	•	—	—
Metallic Black Sapphire		•	•	•	•	•	•	•	•	•	•	•	—	—
Metallic Space Grey		•	•	•	•	•	•	•	•	•	•	•	•	•
Metallic Bluewater		•	•	•	•	•	•	•	•	•	—	—	—	—
Metallic Deep Sea Blue		•	•	•	•	•	•	•	•	•	—	—	—	—
Metallic Le Mans Blue ⁷		—	—	—	—	•	•	•	•	•	—	—	•	•
Metallic Vermilion Red		•	•	•	•	•	•	•	•	•	—	—	•	•
Interior trims														
Satin Silver, matt		•	•	•	•	•	•	•	•	•	—	—	—	—
Black, high-gloss		•	•	•	•	•	•	•	•	•	•	•	—	—
Alpine White		•	•	•	•	•	—	•	•	•	—	—	—	•
Brushed Aluminium with accent lines ^{1,8}		•	•	•	•	•	•	•	•	•	•	•	•	•
Aluminium Glacier Silver ⁷		—	—	—	—	•	•	•	•	•	—	—	•	•
Fine-wood trim Burr Walnut, light		•	•	•	•	•	•	•	•	•	—	—	—	—
Fine-wood trim FineLine Anthracite		•	•	•	•	•	•	•	•	•	•	•	—	—

□ Standard equipment □ Optional equipment • Recommended colour combination — Not available

Standard / Optional equipment.



☐ **Xenon Headlights for high and low beam**, incl. daytime running lights and white accent lights at the front, headlight washing system, four light rings and automatic headlight range control. Significantly improved illumination of the road at night, in bad weather or poor light.

☐ **Adaptive Headlights** with variable light distribution, incl. cornering lights (only available in conjunction with Xenon Headlights) optimally illuminate bends by electro-mechanically swivelling the headlights along the horizontal axis when the driver turns the wheel.



☐ **Rear lights with LED technology**: each taillight is made up of three separate high-performance LED elements. Together with Xenon Headlights, they accentuate the tailgate's dynamic feel.



☒ **Air Curtain**: narrow openings on the left and right of the front apron direct inflowing air into two sealed channels. These lead to the wheel arches, where the air is released at high speed down the sides of the front wheels. This minimises air turbulence around the wheels and wheel arches, thereby further reducing fuel consumption (not available with 135i).



☒ **Halogen headlights for high and low beam** with double headlights and free-form technology.



☒ **Rear lights with innovative lighting design** make the vehicle clearly visible at night or in bad weather.



☐ **Lights package comprises vicinity lights**, which illuminate the area outside the doors for 20 seconds after the door is opened to enable safe vehicle access in the dark. Also includes reading lights front and rear, footwell illumination at the front, vanity mirror lights for driver and front passenger and ambient lighting.

□ Chrome Line Exterior

encompasses the side window trim at the front and rear and the window recess finishers, door sill finishers with chrome inserts as well as the mirror base and mirror frame in Black, high-gloss (standard with 125i, 135i and 123d).



□ Shadow Line, high-gloss, encompasses the side window trim at the front and rear and the window recess finishers, as well as the mirror base and mirror frame in Black, high-gloss.



□ Glass roof, electric, with slide and lift control and remote-operated opening.



■ Exterior mirrors, painted in body colour, with electric adjustment and aspheric on the driver's side. The 125i, 135i and 123d also come with mirror heating.



□ Tow bar with removable ball head (not available with 135i).



□ Rain sensor including automatic headlight activation: once activated, the rain sensor will automatically switch on the windscreen wipers when it begins to rain, adjusting the wiper frequency in line with rainfall intensity. The integrated automatic headlight activation switches on the low beam automatically at dusk and in tunnels.

Standard / Optional equipment.



□ **18" light alloy wheels V-spoke 372** with mixed runflat tyres, front 7.5 J x 18 with 215/40 R 18 tyres, rear 8.5 J x 18 with 245/35 R 18 tyres.



■ **16" light alloy wheels V-spoke 229**¹, 6.5 J x 16 with 195/55 R 16 tyres (standard with 118d), also available as a complete winter wheel set from the Original BMW Accessories range* (only for 120i, 118d and 120d).



□ **16" light alloy wheels Double-spoke 222**¹, 7 J x 16 with 205/55 R 16 tyres (standard with 120i and 120d, not for 125i, 135i and 123d).



□ **16" light alloy wheels V-spoke 360**¹, 7 J x 16 with 205/55 R 16 tyres (not for 125i, 135i and 123d).



□ **17" light alloy wheels Streamline style 370** with mixed runflat tyres, front 7 J x 17 with 205/50 R 17 tyres, rear 7.5 J x 17 with 225/45 R 17 tyres (not for 135i).



□ **17" light alloy wheels Star-spoke 256** with runflat tyres, 7 J x 17 with 205/50 R 17 tyres (standard with 125i and 123d, not for 135i), also available as a complete winter wheel set from the Original BMW Accessories range* (only for 125i, 135i and 123d).



□ **17" light alloy wheels Star-spoke 371** with runflat tyres, 7 J x 17 with 205/50 R 17 tyres (not for 135i).



□ **17" light alloy wheels Star-spoke 262** with mixed runflat tyres, front 7 J x 17 with 205/50 R 17 tyres, rear 7.5 J x 17 with 225/45 R 17 tyres (not for 135i).



□ **18" light alloy wheels Star-spoke 264** with mixed runflat tyres, front 7.5 J x 18 with 215/40 R 18 tyres, rear 8.5 J x 18 with 245/35 R 18 tyres (standard with 135i).

¹ Includes BMW Mobility Set and optionally available with runflat tyres.

² In conjunction with Alpine White interior trim: Alpine White inlay.

* May not be available in all countries. Please consult your BMW partner.



□ **Seven-speed sport automatic transmission with double clutch and gearshift paddles on the steering wheel** for particularly fast gear shifts with no loss of traction; provides outstanding driving dynamics and economical fuel consumption (available with 135i).



■ **Six-speed manual transmission** (shown here with the smoker's package) for a particularly sporty drive. Immensely smooth, with perfect ratios and precise, short-throw gear shifts. The addition of a sixth gear means that the gear ratios are more closely spaced, enabling you to make even more individual use of the engine's power.



□ **Six-speed automatic transmission** (shown here with the non-smoker's package) with Adaptive Transmission Management (ATM). This transmission performs very fast, flawless gear shifts – for maximum dynamic performance (not with 135i).



■ **Standard steering wheel**
(diameter 375 mm), three spokes.



□ **Sport leather steering wheel with multifunction buttons** (diameter 369 mm), chrome inlay², three spokes, including multifunction buttons for the remote control of radio or optional telephone (standard with the 125i, 135i and 123d).

□ **Steering wheel heating** for sport leather steering wheel with multifunction buttons (not in conjunction with Alpine White interior trim).

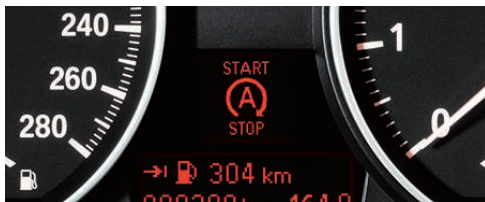


□ **Sport leather steering wheel with multifunction buttons and gearshift paddles** (diameter 369 mm), chrome inlay², three spokes, including multifunction buttons for the remote control of radio or optional telephone.



□ **M leather steering wheel with multifunction buttons** (diameter 369 mm), three spokes, including multifunction buttons for radio and telephone (optional). An M gear lever knob with the M emblem is included should you opt for the manual transmission.

Standard / Optional equipment.



■ **Auto Start/Stop display** on the Info Display indicates when the engine has been switched off by the Auto Start/Stop function (e.g. at traffic lights or in a jam). The engine is re-started automatically when you next depress the clutch, and the signal is turned off (for the 120i, 118d, 120d and 123d in conjunction with a six-speed manual transmission).



■ **Optimum Shift Indicator** shows when switching to another gear would be more fuel efficient; the system recommends when to switch to a higher or lower gear. For example, during acceleration the system will tell you when you could continue accelerating in a higher gear to save fuel (for cars with a six-speed manual transmission).



□ **Storage package** comprises cup holders, luggage nets on the backs of the front seats, 12-V socket, two foldable fastening points in the luggage compartment, storage net on the right, two tensioning straps on the luggage compartment floor as well as a storage tray on top of the instrument panel (not in conjunction with a navigation system).



□ **Cruise Control** stores and maintains a desired speed above approx. 30 km/h (activated using the left-hand steering column stalk). After accelerating, the vehicle automatically returns to the previously stored speed.



■ **Instrument panel** with analogue instruments, red backlit speedometer and rev counter. Plus on-board computer with LC display for mileage counter and trip counter.



□ **Park Distance Control (PDC)**, available for front and rear or rear only, facilitates parking and manoeuvring in confined spaces, giving you an acoustic signal for the distance between your car and an obstacle – a visual representation is also available in conjunction with one of the optional navigation systems.



□ **Navigation Business**, incl. Radio Professional with CD drive, iDrive Controller with direct menu control buttons, eight functional bookmarks, USB/audio interface, voice control system, and a fixed 6.5" graphic display with a map or combined arrow and map display to guide you to your destination.



□ **Navigation Professional**, incl. Radio Professional with DVD drive, iDrive Controller with direct menu control buttons, eight functional bookmarks, integrated hard disc for maps and audio data, RTTI-compatible, USB/audio interface, voice control system, and a built-in, high-resolution 8.8" colour display showing 3D maps as well as bird's eye view.

* May not be available in all countries. Please consult your BMW partner.

¹ Shown here on the 8.8" colour display of the Navigation system Professional.

² For information on compatible devices see www.bmw.com/bluetooth

³ The image of the snap-in adapter may vary from the actual product.

⁴ Comes standard with the navigation systems, navigation packages, hands-free kit and mobile phone preparation.



■ **AUX-IN connection** incl. 12-V socket for an external audio source such as an MP3 player.

□ **USB/audio interface**⁴ for connection of a USB stick or MP3 player. In conjunction with a navigation system, the cover art of the album being played is shown on the Control Display. The interface can be controlled via the buttons on the optional multifunction steering wheel, the Radio Professional or the direct menu control buttons on the iDrive Controller. In conjunction with the optional front armrest you will also receive a multimedia bag.



■ **Radio Business CD**, incl. AM and FM reception, six station buttons, CD drive, MP3 decoder as well as five loudspeakers.

□ **Radio Professional**, same features as above, plus a two-line display e.g. for CD/MP3 song titles.



□ **Harman Kardon Sound System** with powerful amplifier, equalizer, centre speaker and 10 loudspeakers for superb sound.



□ **Internet preparation**^{1,*} For the first time ever you can enjoy unlimited internet access in your car, thanks to BMW ConnectedDrive and your BMW's built-in SIM card. Manually enter web addresses, or access sites directly via the favourites list. While surfing the net, the iDrive Controller becomes your computer mouse.

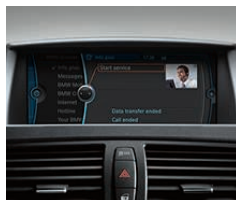


□ **Mobile phone preparation with USB/audio interface**^{2,3}, incl. hands-free kit, connections for recharging and external aerial. Included in the navigation packages.

□ **Hands-free kit with USB/audio interface**² for wirelessly connecting Bluetooth-compatible mobile phones to the on-board computer.



□ **CD changer** located on the left-hand side of the luggage compartment, can take up to six CDs.



□ **BMW Assist**^{1,*} supports the driver with an automatic and manual emergency call function, enabling your vehicle's location to be pinpointed to the metre. Also includes Real-Time Traffic Information (RTTI), Google Send to Car and the information services.



□ **Automatic air conditioning** (shown here), with AAR, microfilter, fogging and solar sensors and ALL button, quickly establishes and maintains the selected temperature. With separate temperature control for left and right.

Standard / Optional equipment.



□ **Sport seats** for driver and front passenger (shown here with optionally available Boston leather upholstery in Black), with infinitely variable electric backrest width adjustment for optimum lateral support, plus manual adjustment of lengthwise seat position, seat height, backrest angle, seat angle and thigh support (standard with 135i).



■ **Rear seats**, ergonomic design, both seats with three-point belts fitted as standard.



■ **Standard seats** (shown here with optionally available Boston leather upholstery in Savanna Beige) with manual seat adjustment, incl. seat height adjustment for the driver and front passenger seats.



□ **Cup holder**, detachable, including mount on centre console.



□ **Seat heating** for driver and front passenger (three settings, shown here with air conditioning), seat surfaces and backrests incl. side supports can be heated to ensure a pleasantly warm surface shortly after starting the car.



■ **Rear storage tray** between the two rear seats provides additional storage space.



□ **Seat adjustment**, electric, for driver and front passenger with seat height, backrest, length and angle adjustment, incl. memory function for driver's seat and exterior mirror (with automatic parking function).



☐ **Ski bag** enables clean and safe transportation of skis and other long objects. If the ski bag is not required, it can be stored out of sight to save space.



■ **Rear seat backrest**, 60:40 split, folds down to create an almost level luggage compartment floor.



■ **Luggage compartment**, illuminated and with all-round textile lining; safe transportation is ensured by an elastic strap on the left-hand side and fastening points on the inside edge (shown here with the optional storage package).



☐ **Interior mirror**, with automatic anti-glare function and large surface area; the glare from following vehicles is automatically reduced when the amount of incident light exceeds a defined limit.



☐ **BMW Welt:** Taking delivery of a car has always ranked among the best moments for any driver. Now that moment can become a truly unforgettable day – at the BMW Welt, the experience and delivery centre in Munich, Germany. Find out more online at www.bmw-welt.com



■ **Personal Profile:** With the Personal Profile, you can store your personal preferences such as the temperature and air distribution settings of the automatic air conditioning, the position of the driver's seat and exterior mirrors, and the volume and sound settings of the radio. These settings are then activated when your key is used to unlock the central locking.



☐ **BMW Service Inclusive.*** Service costs are another area where your BMW Service partner can offer you an intelligent solution. With BMW Service Inclusive, routine maintenance service will be provided at no extra cost for the agreed duration or mileage. For more information visit www.bmw.com/serviceinclusive

* This service may vary by country.

The M Sport package. An expression of superior athleticism.

□ Winning charisma: when you choose the M Sport package, you'll catch everyone's eye with the exclusive Le Mans Blue metallic exterior colour (optional). The athletic front and rear aprons, dynamic side skirts and generous air intakes further emphasise this potent design. As part of the M Sport package you will receive M Sport suspension¹ lowered by 15 mm, as well as captivating black high-gloss Shadow Line trim on the side windows.



powered by 



Alongside the **Le Mans Blue metallic** paint finish shown here, the M Sport package is available in five other enticing colours. Striking down to the last detail: all models featuring the M Sport package come with **chrome-plated tailpipes**.

The **sport seats for driver and front passenger** shown here in the exclusive Flashpoint Black cloth/Sensatec upholstery provide perfect support for every bend.



The **M leather steering wheel** has excellent grip and features multifunction buttons, which can be used to operate the radio, CD player and telephone (optional). Exclusive to the M Sport package: Aluminium Glacier Silver interior trim, M gear lever knob with the M emblem (only with manual transmissions) and the M footrest.



The **M door sill finishers** with M logo and polished chrome inserts provide a stylish welcome.



17" M light alloy wheels Double-spoke 207 M with mixed runflat tyres, front 7 J x 17 with 205/50 R 17 tyres, rear 7.5 J x 17 with 225/45 R 17 tyres.



□ **18" M light alloy wheels Double-spoke 261 M** with mixed runflat tyres, front 7.5 J x 18 with 215/40 R 18 tyres, rear 8.5 J x 18 with 245/35 R 18 tyres (standard with 135i).

* May not be available in all countries. Please consult your BMW partner. ¹ Also available with standard suspension.

Original BMW Accessories*.



Sport stripes, chrome-plated exhaust pipe, 18" light alloy wheels
Double-spoke 182 Black, cast.



Cup holder, can be mounted on the right-hand side of the centre console.



BMW Station for Apple iPhone,
to connect your iPhone to the car's
audio system.



Fitted luggage compartment mat, anti-slip and perfectly fitted.

A BMW always delivers a special drive. And Original BMW Accessories make the experience better still, combining extraordinary ideas with sheer practicality and immaculate design. Discover the all-round innovative solutions on offer in many categories: exterior, interior, communication and information, transportation and storage solutions. Your BMW Service partner will be happy to advise you and provide you with a special catalogue detailing the entire range of Original BMW Accessories. For more information visit

➔ www.bmw.com/accessories

Safety	120i	125i	135i	118d	120d	123d
Airbags:						
– Driver and front passenger airbags	■	■	■	■	■	■
– Head airbags in the front and rear (curtain) with splinter protection	■	■	■	■	■	■
– Side airbags for driver and front passenger, integrated into the seatbacks	■	■	■	■	■	■
Anti-lock braking system , incl. Brake Assist and Cornering Brake Control (CBC)	■	■	■	■	■	■
BMW Service Inclusive* encompasses all kinds of service and maintenance work carried out at all participating BMW Service partners worldwide; individual contract length and service level can be selected	□	□	□	□	□	□
Brakes:						
– Disc brakes at the front and rear, inner-vented	■	■	■	■	■	■
Centre lock switch	■	■	■	■	■	■
Central locking with electronic immobiliser, crash sensor; fuel tank filler cap integrated into the central locking system	■	■	■	■	■	■
Dynamic brake lights	■	■	■	■	■	■
Dynamic Stability Control (DSC, incl. DTC) and Cornering Brake Control (CBC)	■	–	–	■	■	■
Dynamic Stability Control (DSC) with additional functions and Cornering Brake Control (CBC)	–	■	■	–	–	–
ISOFIX child seat attachment in the rear	■	■	■	■	■	■
ISOFIX child seat attachment for the front passenger seat	□	□	□	□	□	□
Seat belts:						
– Ergonomic belt system in the rear with three-point belts on all seats	■	■	■	■	■	■
– Inertia-reel seat belts in the front with belt tensioners and belt force limiters	■	■	■	■	■	■
Safety body shell:						
– Bumpers with steel impact absorber units at the front and rear, regenerating after impacts at up to 4 km/h, crumple zones at front and rear absorb impacts at up to 15 km/h	■	■	■	■	■	■
– Side impact protection, integrated into the doors	■	■	■	■	■	■

Exterior design	120i	125i	135i	118d	120d	123d
Air Curtain (narrow openings on either side of the front apron)	■	■	–	■	■	■
Chrome Line exterior	□	■	■	□	□	■
Exterior features in body colour (bumpers, door handles and roof strips)	■	■	■	■	■	■
Exterior mirrors in body colour , electrically adjustable, aspheric on driver's side (incl. heating with 125i, 135i and 123d)	■	■	■	■	■	■
Indicators, white	■	■	■	■	■	■
Kidney grille slats in black	■	■	–	■	■	■
Kidney grille slats in chrome	–	–	■	–	–	–
Metallic paintwork	□	□	□	□	□	□
Preparation for rear luggage rack (not available in conjunction with M Sport package)	□	□	–	□	□	□
Shadow Line , high-gloss	□	□	□	□	□	□
Tailpipes , chrome-plated (123d and 135i in black chrome; 125i and 135i with twin pipes)	■	■	■	–	■	■
Tow bar with removable ball head , incl. trailer stability control	□	□	–	□	□	□

Equipment packages*	120i	125i	135i	118d	120d	123d
Advantage package	□	□	□	□	□	□
Comfort Package	□	□	□	□	□	□
Dynamics package	□	□	–	□	□	□
M Aerodynamics package with front apron and rear spoiler specially designed for the 135i	–	–	■	–	–	–
M Sport package with sport suspension (also available with standard suspension)	□	□	□	□	□	□

¹ Runflat tyres.² Not available in conjunction with sport seats.³ Only available in conjunction with sport seats.

* May not be available in all countries. Please consult your BMW partner.

Wheels	120i	125i	135i	118d	120d	123d
Runflat indicator	■	■	■	■	■	■
Runflat tyres	□	■	■	□	□	■
Wheels:						
– 16" light alloy wheels Double-spoke 222, 7 J x 16 with 205/55 R 16 tyres	■	–	–	□	■	–
– 16" light alloy wheels V-spoke 229, 6.5 J x 16 with 195/55 R 16 tyres	–	–	–	■	–	–
– 16" light alloy wheels V-spoke 360, 7 J x 16 with 205/55 R 16 tyres	□	–	–	□	□	–
– 17" light alloy wheels Star-spoke 256, 7 J x 17 with 205/50 R 17 tyres ¹	□	■	–	□	□	■
– 17" light alloy wheels Star-spoke 262 with mixed tyres, front 7 J x 17 with 205/50 R 17 tyres, rear 7.5 J x 17 with 225/45 R 17 tyres ¹	□	□	–	□	□	□
– 17" light alloy wheels Star-spoke 371, 7 J x 17 with 205/50 R 17 tyres ¹	□	□	–	□	□	□
– 17" light alloy wheels Streamline style 370 with mixed tyres, front 7 J x 17 with 205/50 R 17 tyres, rear 7.5 J x 17 with 225/45 R 17 tyres ¹	□	□	–	□	□	□
– 17" M light alloy wheels Double-spoke 207 M with mixed tyres, front 7 J x 17 with 205/50 R 17 tyres, rear 7.5 J x 17 with 225/45 R 17 tyres (only in conjunction with the M Sport package or the Sport Edition) ¹	□	□	–	□	□	□
– 18" light alloy wheels Star-spoke 264 with mixed tyres, front 7.5 J x 18 with 215/40 R 18 tyres, rear 8.5 J x 18 with 245/35 R 18 tyres ¹	□	□	■	□	□	□
– 18" light alloy wheels V-spoke 217 with mixed tyres, front 7.5 J x 18 with 215/40 R 18 tyres, rear 8.5 J x 18 with 245/35 R 18 tyres (only in conjunction with the Exclusive Edition) ¹	□	□	■	□	□	□
– 18" light alloy wheels V-spoke 372 with mixed tyres, front 7.5 J x 18 with 215/40 R 18 tyres, rear 8.5 J x 18 with 245/35 R 18 tyres ¹	□	□	□	□	□	□
– 18" M light alloy wheels Double-spoke 208 M with mixed tyres, front 7.5 J x 18 with 215/40 R 18 tyres, rear 8.5 J x 18 with 245/35 R 18 tyres (only in conjunction with the Sport Edition) ¹	–	–	□	–	–	–
– 18" M light alloy wheels Double-spoke 261 M in Ferric Grey with mixed tyres, front 7.5 J x 18 with 215/40 R 18 tyres, rear 8.5 J x 18 with 245/35 R 18 tyres (only in conjunction with the M Sport package) ¹	□	□	□	□	□	□
– 18" M light alloy wheels Double-spoke 313 M in Ferric Grey with mixed tyres, front 7.5 J x 18 with 215/40 R 18 tyres, rear 8.5 J x 18 with 245/35 R 18 tyres (only in conjunction with the Sport Edition) ¹	□	□	■	□	□	□
Wheels with the BMW Mobility Set	■	–	–	■	■	–

Interior design	120i	125i	135i	118d	120d	123d
BMW Individual roofliner in Anthracite	□	□	□	□	□	□
Door sill finishers with chrome inserts	–	■	■	–	–	■
Instrument panel with round dials for speedometer and rev counter, fuel gauge and on-board computer displays	■	■	■	■	■	■
Interior trims:						
– Alpine White	□	□	□	□	□	□
– Black, high-gloss	□	□	□	□	□	□
– Brushed Aluminium with accent lines	□	□	■	□	□	□
– Fine-wood trim Burr Walnut, light	□	□	□	□	□	□
– Fine-wood trim Finesline Anthracite	□	□	□	□	□	□
– Satin Silver, matt	■	■	–	■	■	■
Upholstery:						
– Boston leather	□	□	□	□	□	□
– Elektra cloth ²	■	–	–	■	■	–
– Network cloth	□	■	■	□	□	■
– Pearlpoint cloth/leather upholstery ³	□	□	□	□	□	□

Transmission and technology	120i	125i	135i	118d	120d	123d
Active Steering , incl. Servotronic	–	□	□	–	–	–
Auto Start/Stop function , only in conjunction with six-speed manual transmission	■	–	–	■	■	■
BMW four-cylinder diesel engine with 4-valve technology	–	–	–	■	■	–
BMW four-cylinder petrol engine with 4-valve technology	■	–	–	–	–	–
BMW six-cylinder in-line petrol engine with 4-valve technology	–	■	–	–	–	–
BMW TwinPower Turbo four-cylinder diesel engine with 4-valve technology	–	–	–	–	–	■
BMW TwinPower Turbo six-cylinder in-line petrol engine with 4-valve technology	–	–	■	–	–	–
Brake Energy Regeneration	■	■	■	■	■	■
CommonRail technology	–	–	–	■	■	■
Diesel particle filter	–	–	–	■	■	■
Double-joint spring strut front axle and multi-arm rear axle	■	■	■	■	■	■

Transmission and technology	120i	125i	135i	118d	120d	123d
Double-VANOS	■	■	■	—	—	—
Emissions standard: EU5	■	■	■	■	■	■
Fuel sensor for diesel models	—	—	—	■	■	■
High Precision Injection , jet-controlled	■	—	■	—	—	—
Locking differential , electronic, function only in DSC Off mode	—	■	■	—	—	■
M Sport suspension , lowered by 15 mm	□	□	■	□	□	□
Optimum Shift Indicator , only in conjunction with six-speed manual transmission	■	■	■	■	■	■
Power steering	■	■	■	■	■	■
Servotronic	□	□	—	□	□	□
Seven-speed sport automatic transmission with double clutch, incl. gearshift paddles on the steering wheel	—	—	□	—	—	—
Six-speed automatic transmission	□	□	—	□	□	□
Six-speed manual transmission	■	■	■	■	■	■
Valvetronic	—	■	■	—	—	—
Variable Twin Turbo	—	—	—	—	—	■

BMW ConnectedDrive – driver assistance systems	120i	125i	135i	118d	120d	123d
Cruise Control	□	□	□	□	□	□
High-beam assistant (only in conjunction with Xenon Headlights, rain sensor and interior mirror with automatic anti-glare function)	□	□	□	□	□	□
Park Distance Control (PDC) rear	□	□	□	□	□	□
Park Distance Control (PDC) front and rear	□	□	□	□	□	□

Light and sight	120i	125i	135i	118d	120d	123d
Adaptive Headlights with variable light distribution , incl. cornering lights	□	□	□	□	□	□
Exterior mirror package , incl. fold-in function, heated exterior mirrors, memory function (via Personal Profile) and automatic parking function	□	□	□	□	□	□
Fog lights , incl. heated exterior mirrors and screenwasher nozzles	□	■	—	□	□	■
Halogen headlights for high and low beams	■	■	■	■	■	■
Interior and exterior mirrors with automatic anti-glare function, exterior mirror aspheric on driver side, incl. content of exterior mirror package	□	□	□	□	□	□
Lights package , with vicinity lights integrated into the door handles, ambient lighting, reading lights front and rear, footwell illumination at the front, and illuminated vanity mirrors for driver and front passenger	□	□	□	□	□	□
Rain sensor , incl. automatic headlight activation	□	□	□	□	□	□
Sun protection glass	□	□	□	□	□	□
Xenon Headlights for high and low beam , incl. daytime running lights and white accent lights at the front, headlight washing system, four light rings, automatic headlight range control and LED rear lights	□	□	□	□	□	□

Interior	120i	125i	135i	118d	120d	123d
Air conditioning , incl. microfilter	□	■	■	□	□	■
Automatic air conditioning , incl. AAR, microfilter, fogging and solar sensors and ALL button, with separate temperature adjustment for driver and front passenger	□	□	□	□	□	□
Seats/seat comfort:						
– Four-seat option, incl. storage tray in the rear	■	■	■	■	■	■
– Height adjustment for driver and front passenger seats	■	■	■	■	■	■
– Lumbar support for driver and front passenger, electric	□	□	□	□	□	□
– Rear seat backrest, foldable, 60 : 40 split	■	■	■	■	■	■
– Seat adjustment, electric, with memory function for driver's seat	□	□	□	□	□	□
– Seat heating for driver and front passenger	□	□	□	□	□	□
– Sport seats for driver and front passenger, with electric backrest width adjustment	□	□	■	□	□	□
– Standard seat, manual seat adjustment	■	■	—	■	■	■
Steering wheels:						
– Gearshift paddles on sport leather steering wheel/M leather steering wheel (only in conjunction with automatic transmissions)	□	□	□	—	□	□
– M leather steering wheel, including multifunction buttons	□	□	□	□	□	□
– Sport leather steering wheel, including multifunction buttons	□	■	■	□	□	■
– Standard steering wheel	■	—	—	■	■	—
– Steering wheel heating for sport leather steering wheel, including multifunction buttons	□	□	□	□	□	□

Comfort and interior equipment	120i	125i	135i	118d	120d	123d
Alarm system with remote control	□	□	□	□	□	□
Comfort Access system	□	□	□	□	□	□
Cup holder, mountable	□	□	□	□	□	□
Electric windows , with one-touch open/close fingertip control and trap release	■	■	■	■	■	■
Front armrest , foldable, with storage compartment	□	□	□	□	□	□
Glass sliding/vent roof , electric, with remote opening function via car key	□	□	□	□	□	□
Glove compartment , illuminated	■	■	■	■	■	■
Grey shade band on windscreen	□	□	□	□	□	□
Interior mirror with automatic anti-glare function	□	□	□	□	□	□
Lined luggage compartment , 370-litre capacity	■	■	■	■	■	■
Personal Profile , personalisation of important controls	■	■	■	■	■	■
Radio remote control for central locking	■	■	■	■	■	■
Ski bag , modular with interchangeable frame	□	□	□	□	□	□
Storage compartment in the lower left of the dashboard and in the doors	■	■	■	■	■	■
Storage package including storage compartment at the top of the instrument panel (not in conjunction with a navigation system), nets in the back of the front seats, cup holders, 12 V socket, storage net at the right of the luggage compartment, two tensioning belts on the floor of the luggage compartment and two fold-down fastening points	□	□	□	□	□	□

Entertainment, communication and information	120i	125i	135i	118d	120d	123d
BMW ConnectedDrive* – Telematics Services*:						
– Apps, e.g. for reception of international online radio stations (in conjunction with BMW Connected App and an iPhone)	□	□	□	□	□	□
– BMW Assist	□	□	□	□	□	□
– BMW Online	□	□	□	□	□	□
– Internet preparation and Real-Time Traffic Information (RTTI) in conjunction with the Navigation Professional package	□	□	□	□	□	□
Navigation Business: Navigation Business with Radio Professional incl. CD drive, iDrive Controller with direct menu control buttons, functional bookmarks, integrated hard disc for navigation data, high-resolution built-in 6.5" display with map or combined arrow and map display, voice control system and USB/audio interface	□	□	□	□	□	□
Navigation Professional: Navigation Professional with high-resolution built-in 8.8" colour display, DVD drive, functional bookmarks, 3D map and arrow display, as well as bird's-eye view, integrated hard disc for maps and audio data, including Radio Professional, iDrive Controller with direct menu control buttons, voice control system and USB/audio interface	□	□	□	□	□	□
Navigation Business package and mobile phone preparation with USB interface (incl. BMW Assist* and BMW Online*)	□	□	□	□	□	□
Navigation Professional package and mobile phone preparation with USB interface (incl. BMW Assist* and BMW Online*, internet preparation* and RTTI*)	□	□	□	□	□	□
On-board computer (incl. Check Control)	■	■	■	■	■	■
Radio/audio:						
– AUX-IN connection in the centre console, incl. 12V socket	■	■	■	■	■	■
– CD changer in the luggage compartment incl. MP3 decoder, holds up to six CDs	□	□	□	□	□	□
– DAB tuner, DAB+ compatible, only in conjunction with a navigation system or Radio Professional	□	□	□	□	□	□
– HiFi loudspeaker system	□	□	□	□	□	□
– Harman/Kardon Sound System	□	□	□	□	□	□
– Music interface for smartphones	□	□	□	□	□	□
– Radio Business CD	■	■	■	■	■	■
– Radio Professional	□	□	□	□	□	□
Rear window antennae¹	■	■	■	■	■	■
Telephone:						
– Hands-free kit with USB interface (only in conjunction with Radio Professional)	□	□	□	□	□	□
– Mobile phone preparation with USB interface (only in conjunction with Radio Professional)	□	□	□	□	□	□

* May not be available in all countries. Please consult your BMW partner.

¹ Additional roof antenna in conjunction with navigation, mobile phone preparation and DAB tuner.

Weight		120i	125i	135i	118d	120d	123d
Unladen weight EU ¹	kg	1375 [1395]	1480 [1505]	1530 [1545]	1395 [1420]	1450	1495
Max. permissible weight	kg	1740 [1760]	1845 [1870]	1895 [1910]	1760 [1785]	1815 [1820]	1860
Permitted load	kg	440	440	440	440	440	440
Permitted axle load, front/rear	kg	845/980	910/1005	940/1030	850/990	895/985	925/1000
Permitted roof load	kg	75	75	75	75	75	75
Permitted trailer load, unbraked ²	kg	680	700	—	690	720	740
Permitted trailer load, braked, max. 12% gradient ²	kg	1200	1200	—	1200	1200	1200
Permitted trailer load, braked, max. 8% gradient ²	kg	1200	1200	—	1200	1200	1200
Permitted tow bar download	kg	75	75	—	75	75	75

Engine ^{3, 4}		120i	125i	135i	118d	120d	123d
Cylinders/valves		4/4	6/4	6/4	4/4	4/4	4/4
Capacity	cc	1995	2996	2979	1995	1995	1995
Stroke/bore	mm	90.0/84.0	88.0/85.0	89.6/84.0	90.0/84.0	90.0/84.0	90.0/84.0
Max. output/engine speed	kW/rpm (hp/rpm)	125/6700 (170/6700)	160/6100 (218/6100)	225/5800 (306/5800)	105/4000 (143/4000)	130/4000 (177/4000)	150/4400 (204/4400)
Max. torque/engine speed	Nm/rpm	210/4250	270/2500–4250	400/1200–5000	300/1750–2500	350/1750–3000	400/2000–2250
Compression ratio:	:1	12.0	10.7	10.2	16.5	16.5	16.5

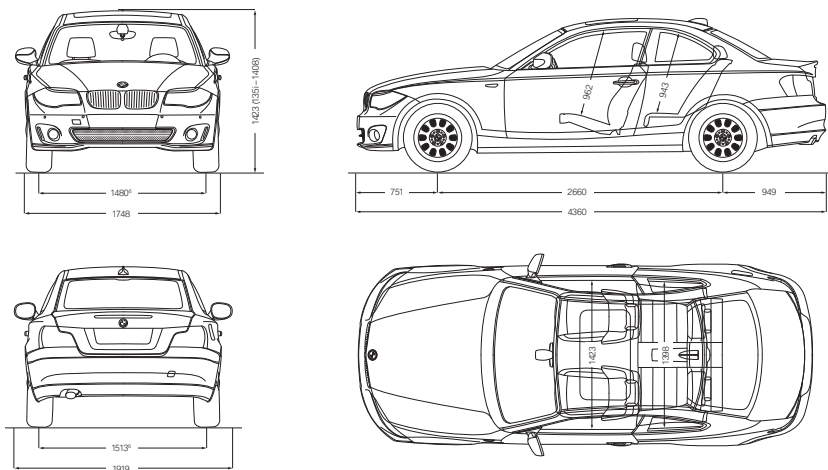
Transmission		120i	125i	135i	118d	120d	123d
Standard transmission ratio	III :1	4.32/2.46	4.32/2.46	4.11/2.32	4.0/2.11	5.14/2.83	5.08/2.80
	III/IV :1	1.66/1.23	1.66/1.23	1.54/1.18	1.38/1.0	1.80/1.26	1.78/1.26
	V/VI/R :1	1.0/0.85/3.94	1.0/0.85/3.94	1.0/0.85/3.73	0.78/0.65/3.19	1.0/0.83/4.64	1.0/0.84/4.61
Rear axle transmission ratio:	:1	3.73	3.23	3.08	3.07	2.56	2.79

Performance		120i	125i	135i	118d	120d	123d
Top speed	km/h	224 [222]	245 [243]	250 ⁵	210	228 [226]	238 [236]
Acceleration 0–100 km/h	sec	7.8 [8.4]	6.4 [7.0]	5.3 [5.2]	9.0 [9.1]	7.6 [7.8]	7.0 [7.1]
Acceleration 80–120 km/h in 4th/5th gear (with standard transmission)	sec	7.5/9.6	6.8/8.4	5.0/6.0	7.7/10.1	6.4/8.0	5.5/6.6

Fuel consumption ^{3, 4}		120i	125i	135i	118d	120d	123d
Urban	l/100 km	8.5 [8.9]	11.8 [11.6]	12.1 [11.7]	5.3 [6.7]	5.9 [6.7]	6.4 [6.9]
Extra-urban	l/100 km	5.3 [5.3]	5.9 [6.1]	6.4 [6.7]	4.0 [4.5]	4.0 [4.5]	4.3 [4.7]
Combined	l/100 km	6.5 [6.6]	8.1 [8.1]	8.5 [8.5]	4.5 [5.3]	4.7 [5.3]	5.1 [5.5]
CO ₂ emissions	g/km	152 [154]	189 [189]	198 [198]	118 [140]	124 [140]	134 [145]
Tank capacity approx.	l	53	53	53	51	51	51

Wheels		120i	125i	135i	118d	120d	123d
Tyre dimensions	front rear	205/55 R 16 V	205/50 R 17 W	215/40 R 18 Y 245/35 R 18 Y	195/55 R 16 H	205/55 R 16 V	205/50 R 17 W
Wheel dimensions		7 J x 16	7 J x 17	7.5 J 8.5 J x 18	6.5 J x 16	7 J x 16	7 J x 17
Material		light alloy	light alloy	light alloy	light alloy	light alloy	light alloy

Electrical system		120i	125i	135i	118d	120d	123d
Battery capacity	Ah	80 [70]	70	70	90 [80]	90 [80]	90 [80]
Alternator output	A	180	150 [180]	180	180	180	180
	W	2520	2100 [2520]	2520	2520	2520	2520



All dimensions in the technical drawings are given in millimetres. Luggage compartment approx. 370 litres.

¹ The figure quoted includes a 90% full tank, 68 kg for the driver and 7 kg for luggage. Unladen weight applies to vehicles with standard equipment. Optional equipment may increase this figure.

² The actual overall trailer weight may not exceed the max. permitted trailer load plus the max. permitted tow bar download.

³ BMW recommends the use of RON 95 super unleaded petrol. Unleaded 91 RON and higher with a maximum ethanol content of 10% (E10) may also be used.

Output and fuel consumption figures apply to RON 98 fuel (135i: not less than RON 95).

⁴ All engines comply with the EU5 emissions standard. Fuel consumption is determined in accordance with the ECE driving cycle (93/116/EEC), which consists of approximately one third urban traffic and two thirds extra-urban driving (based on the distance covered). CO₂ emissions are measured in addition to fuel consumption. Optional equipment may increase these figures. For further information about fuel consumption or CO₂ emissions, please contact your BMW partner.

⁵ Electronically limited.

⁶ Track front / rear for 135i 1470/1497 mm, for 125i and 123d 1474/1507 mm and for 118d 1484/1517 mm.

Values in [] refer to vehicles with the six-speed automatic transmission or seven-speed sport automatic transmission with double clutch (135i).

The BMW Service concept: always up to speed. When you buy a BMW, you can look forward to superb service and comprehensive customer care, with a worldwide network of more than 3,300 BMW Service partners in more than 150 countries ready to assist you at any time. The vehicle's on-board diagnostics keep you informed of when the car is next due for a check-up and what work needs to be done: **Condition-Based Service (CBS)** tracks service fluids and the condition of essential parts subject to wear. It also monitors the time- and mileage-linked service requirements of your BMW. Using these measurement data, the Info Display in the cockpit automatically alerts you in advance whenever

any part of the vehicle requires servicing. The iDrive Control Display contains exact information on which vehicle components will need to be serviced and when. In conjunction with BMW TeleServices*, the innovative telematics service provided by BMW Service, the CBS data are automatically transmitted to your BMW Service partner. This means that your service consultant has more time for you, and can provide more comprehensive advice. Your BMW Service partner will of course have **Original BMW Parts** available for any work to be done. In short: quality and safety are our top priorities.

TAILOR-MADE FOR YOUR VEHICLE. BMW SERVICE.



BMW Service Inclusive*. Service costs are another area where your BMW Service partner can offer you an intelligent solution. With BMW Service Inclusive, routine maintenance service will be provided at no extra cost to you, for the agreed duration or mileage. Find out more online at

www.bmw.com/serviceinclusive



With **BMW TeleServices***, you are always in safe hands. This feature enables your BMW to contact your BMW Service partner and register itself for a service appointment. As soon as the CBS sensors detect a service requirement, the vehicle will initiate an automatic BMW Teleservice call and transmit all service-related data – data which previously had to be collected in the workshop. Your service consultant will then call you back, in order to arrange an appointment. As vehicle information is transferred in advance, time in the garage can be spent more efficiently, so your BMW is back on the road faster. In the unlikely event of a breakdown, BMW TeleServices enables you to transmit diagnostics, vehicle and location data directly to BMW breakdown assistance. With BMW Teleservice Assistance, malfunctions can often be remedied remotely, getting you quickly and easily back on the road. For further information, visit

www.bmw.com/teleservices



Mobile Service*: in the event of a breakdown, BMW Mobile Service is at your disposal round the clock. Specially trained BMW technicians will do everything necessary to get your BMW back on the road, with telephone or on-site assistance as needed. Simply contact BMW Mobile Service. In addition, all BMW vehicles newly registered from 1 January 2011, have a comprehensive 24-month mobility service in line with the applicable BMW Mobile Care warranty conditions (including towing, rental car, taxi, hotel accommodation and vehicle return). This BMW mobility warranty is automatically extended by another 24 months if you have the scheduled engine oil service performed by your authorised BMW Service partner – for up to 5 years after initial vehicle registration. More detailed information is available from your BMW Service partner or online at

www.bmw.com/mobileservice



BMW Financial Services. If there's one more thing you could wish for to go with your BMW, it could simply be the perfect financing solution – one that leaves you with enough room for the other good things in life. BMW Financial Services provides you with personalised leasing, finance and insurance options – tailored to your requirements and budget. But we offer you more than just favourable conditions. Take for example the components of our leasing package, which include courtesy vehicles and insurance. For further information please visit www.bmwfs.com. Find out more – your BMW partner will be pleased to make you an individual offer for your desired car.

* May not be available in all countries.
Please consult your BMW partner.



SHAPING THE FUTURE – RESPONSIBLY.

The BMW Group has been ranked the most sustainable automotive company worldwide in the Dow Jones Sustainability Index for the seventh time in a row, because sustainability is an integral part of our value chain – it encompasses every stage from the development of fuel-saving and alternative vehicle concepts to environmentally friendly production processes and recycling. Our research and development philosophy BMW EfficientDynamics delivers tangible benefits to customers, our climate and the environment. Since 1995,



EXPERIENCE MORE WITH BMW.



BMW Magazine: information and entertainment. Competent and comprehensive, the BMW Magazine brings you all the latest news from the world of BMW. You will receive two issues per year free of charge when you purchase a new BMW.



BMW Driving Experience: "Learn how to enhance your driving pleasure." Driving a BMW should be fun. And like any other piece of sport equipment, the better you are able to control it, the more fun it is. The BMW Driving Experience teaches you – on road and off, in snow and ice, or even in the Namibian desert – how far you can push your BMW, while still remaining perfectly safe. Topics range from BMW Safety and Snow and Ice to M Race Track Training on one of the toughest race tracks in the world – the Nürburgring. More information is available at

www.bmw-drivingexperience.com



BMW Welt: joy has a home. Visit Munich, home to the BMW brand for over 90 years, and pick up your new BMW at BMW Welt. There you'll be able to experience BMW with all five senses and see your new BMW for the first time with your own eyes. BMW Welt offers you a tailor-made visitor programme. From relaxing in the Premium Lounge to a factory tour or a visit to the BMW Museum – there are plenty of unique experiences to perfectly complement the hand-over of your new car. It's more than worth it. Visit us online today at www.bmw-welt.com. Your local BMW partner can also provide you with further information. We look forward to seeing you.



BMW TV: your source for all things BMW. This is where you can get to know the brand in all its facets, through comprehensive features, portraits, and background reports.

www.bmw.tv/com provides you with up-to-date and entertaining information on automobiles, innovations, motor shows, events, sports, and lifestyle topics.

for example, our European new-vehicle fleet's CO₂ emissions have dropped by around 30%.

But we are still aiming for more: over the period from 2006 to 2012, we aim to reduce the amount of resources – such as water and energy – consumed by our vehicle manufacturing operations by 30% per vehicle. In our engine plant in Steyr, Austria, we are already one step further: since 2007, production there has generated no waste water at all.

And of course each of our vehicles is designed for easy and economical recycling after its long running life. Please contact your BMW partner on all matters regarding your end-of-life vehicle. Further information on this topic is also available on our website.

www.bmw.com/recycling
www.bmw.com/EfficientDynamics
www.bmwgroup.com/responsibility

More about BMW



Sheer
Driving Pleasure

www.bmw.com



The models illustrated in this brochure show the specifications of vehicles produced by BMW AG for the German market. In part, they include optional equipment and accessories not fitted as standard. According to the specific requirements of other markets, alterations in models, standard and optional equipment, as described in this brochure, may occur. For more precise information about country-specific vehicle versions, please contact your local BMW partner. Subject to change in design and equipment.
© BMW AG, Munich/Germany. Not to be reproduced wholly or in part without written permission of BMW AG, Munich.

BMW recommends **EDGE**

